

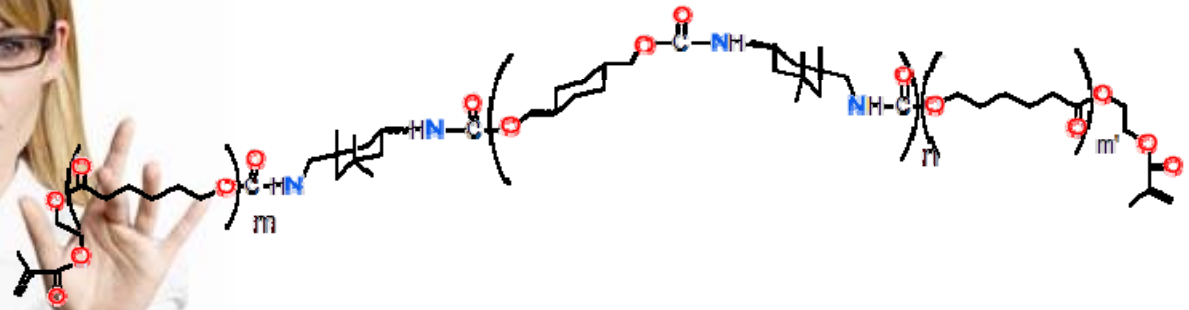
Technical Overview



Three components factor into KALORE's unique design:

- DuPont's new monomer technology
- GC America's patented HDR* prepolymerized fillers
- The proprietary interphase between the fillers and the matrix

A Breakthrough in the Matrix Phase



The DuPont Monomer

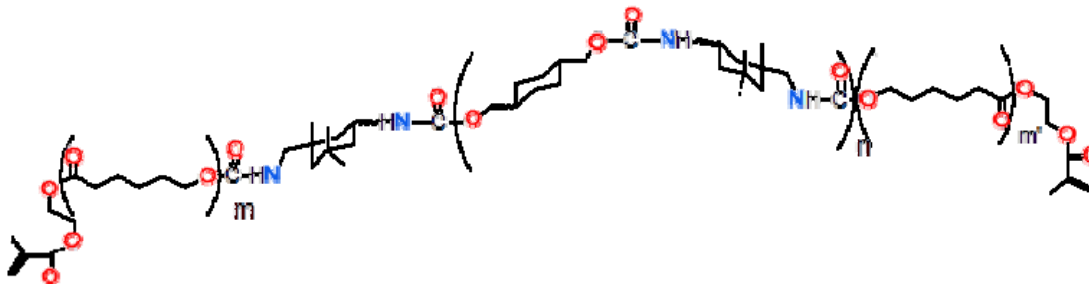
A Breakthrough in Matrix Phase

DX-511 Monomer (New Monomer Technology from Dupont)

UDMA (Urethane Dimethacrylate)

Dimethacrylate co-monomers

No Bis-GMA

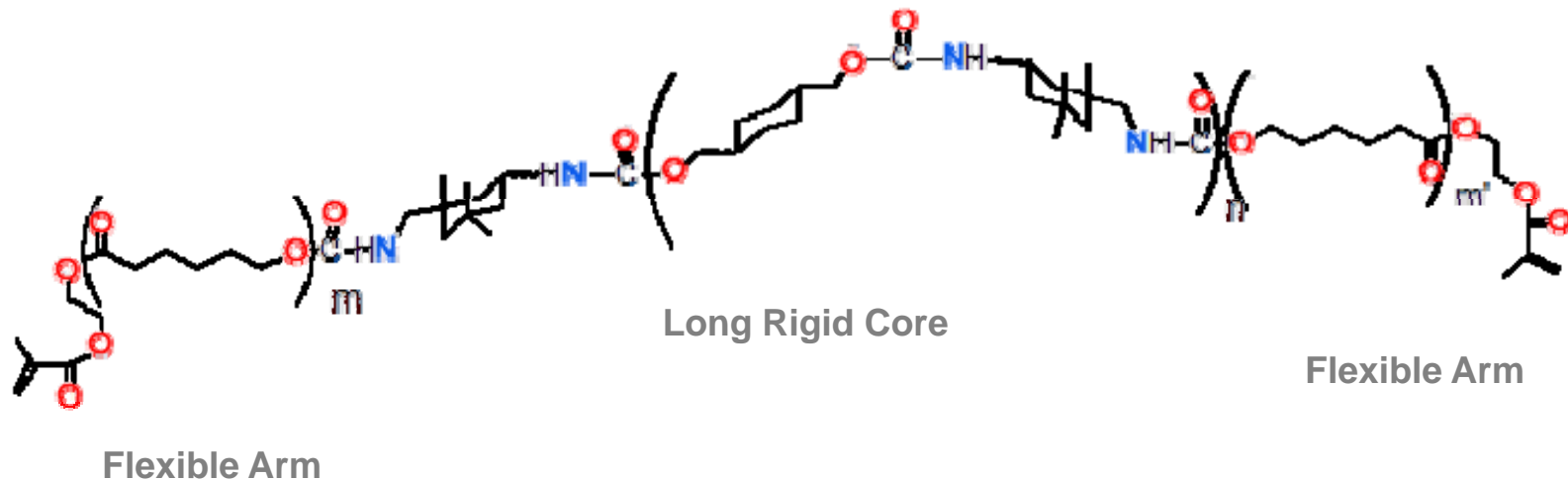


GC

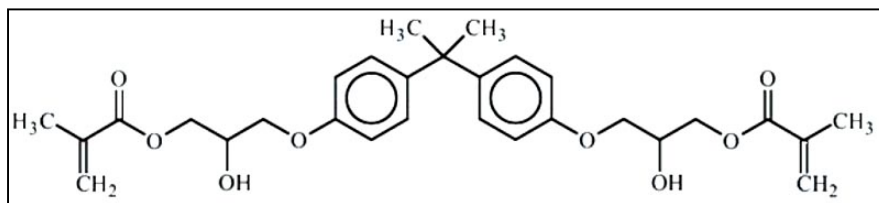
The DuPont Monomer

DX-511 Monomer (New Monomer Technology from DuPont)

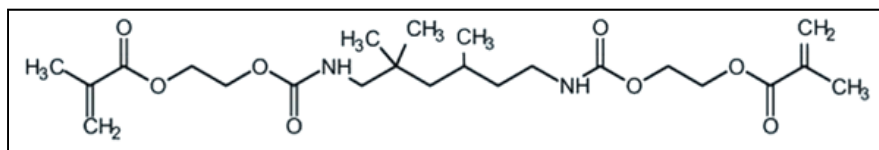
- The long rigid core helps reduce polymerization shrinkage.
- The flexible side arms help increase monomer reactivity.
- High molecular weight (895) and low number of C=C double bonds help reduce polymerization shrinkage.
- The monomer is compatible with current adhesive and composite products.



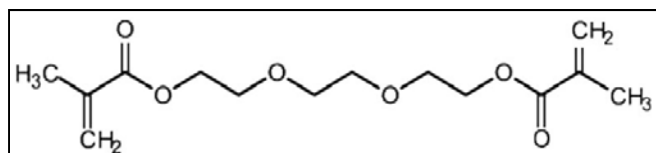
DX-511 (DuPont monomer) compared with typical Resin Based Monomers, Relative Size and Molecular Weights



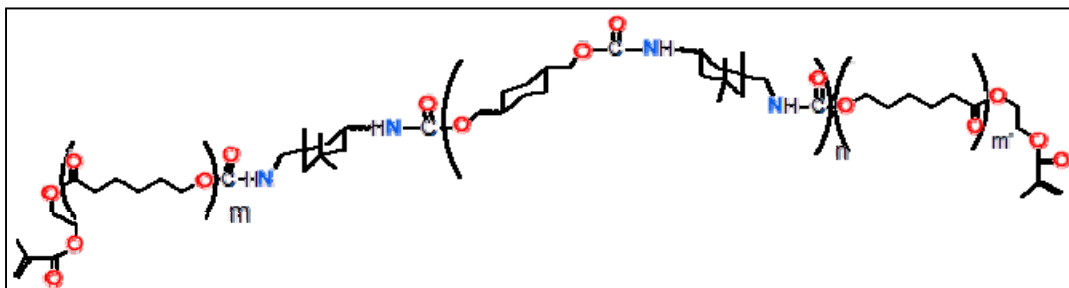
Bis-GMA,
MW 512.6



UDMA
MW 470.6

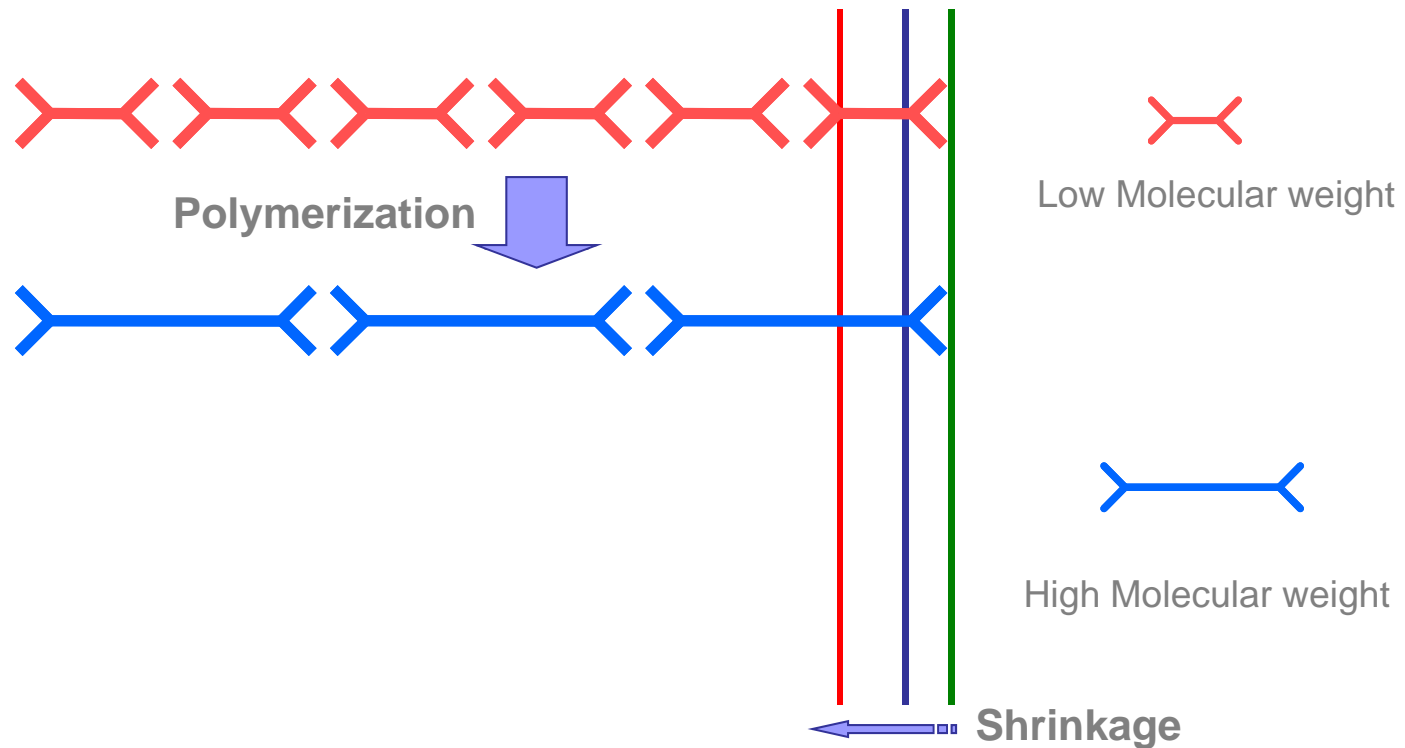


TEGDMA
MW 286.3



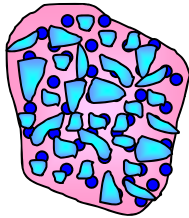
DX-511
MW 895

Increasing the size and molecular weight of monomers reduces overall shrinkage



Chemistry

New Prepolymerized Filler of KALORE™

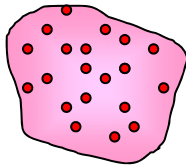


Ave. 17 μm
400 nm Strontium Glass
100 nm lanthanoid fluoride
Special Surface treatment



High Radiopacity

Conventional Prepolymerized Filler



Ave. 17 μm
16 nm silica filler



No Radiopacity

Both Strontium Glass and Lanthanoid Fluoride have radiopacity.
Especially, Nano Lanthanoid Fluoride has high radiopacity and does not block visible light.

A New Improved Filler Phase

Prepolymerized filler (with Lanthanoid Fluoride)

- 30 – 35% by weight

Fluoroaluminosilicate glass

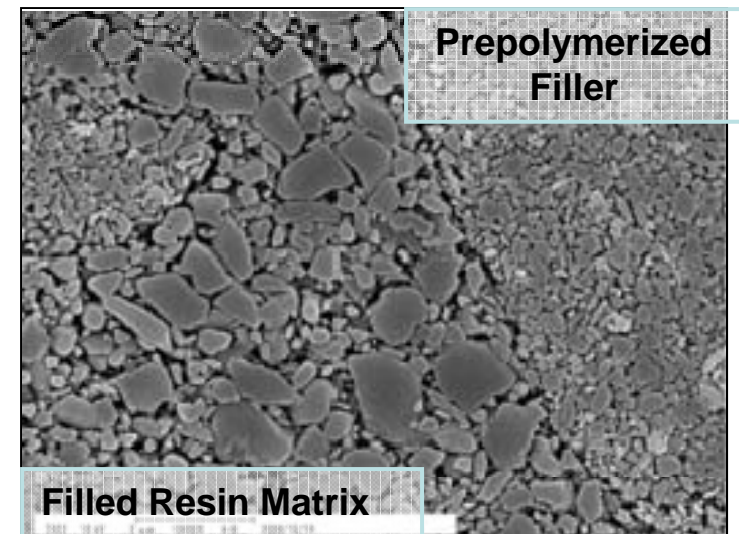
- 20 – 30% by weight

Strontium/Barium glass

- 20 – 33% by weight

Silicon dioxide (Nanofiller)

- 1 – 5% by weight

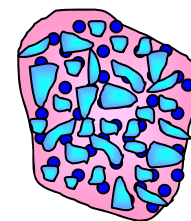
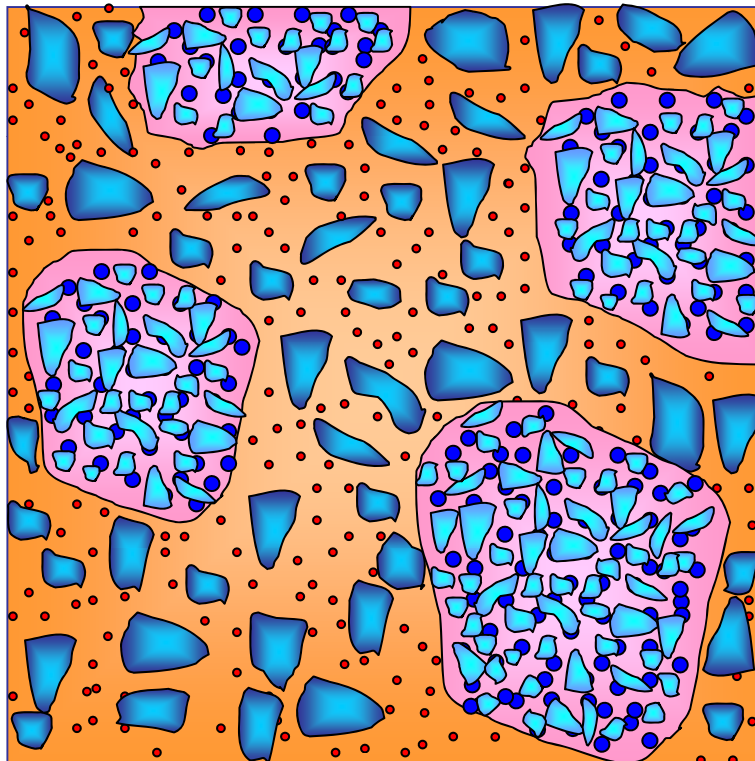


Prof. Miyazaki Nihon University SEM image x10000

82% Filled by weight

A New Improved Filler Phase

New Prepolymerized Filler



Average Size 17 μm

 400 nm Strontium Glass

 100 nm Lanthanoid fluoride

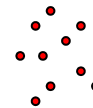
Glass Fillers



700 nm Strontium Glass

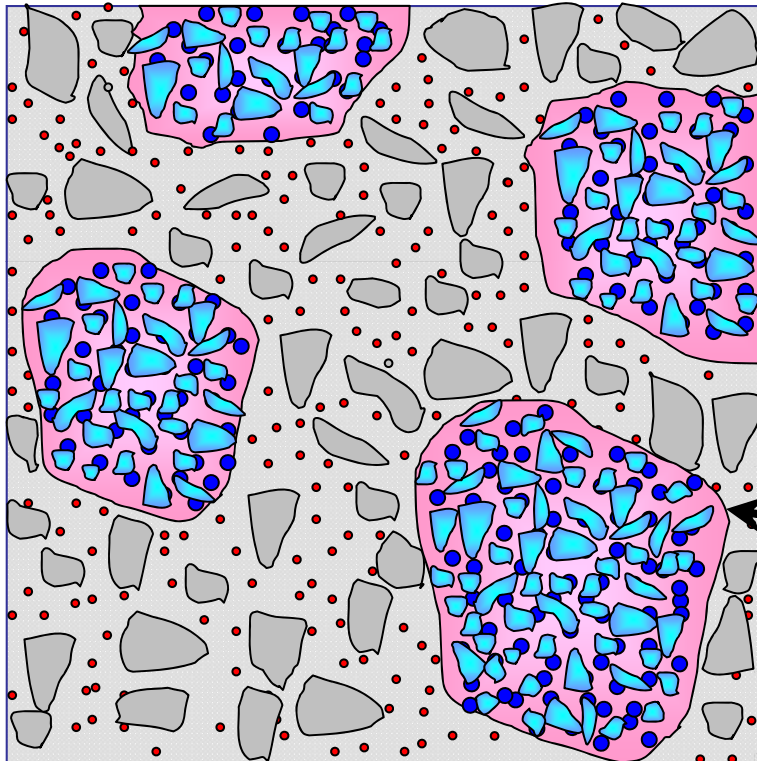
700 nm Fluoroaluminum Silicate Glass

Non-aggregated Nano Silica Filler



16 nm Silica filler

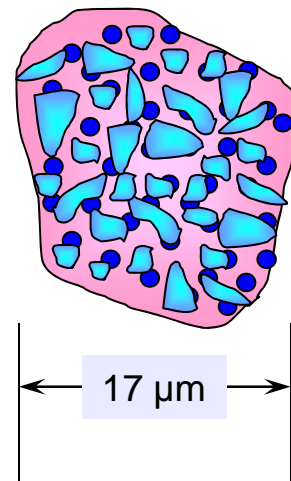
A New Improved Filler Phase



New HDR Prepolymerized Filler Particles

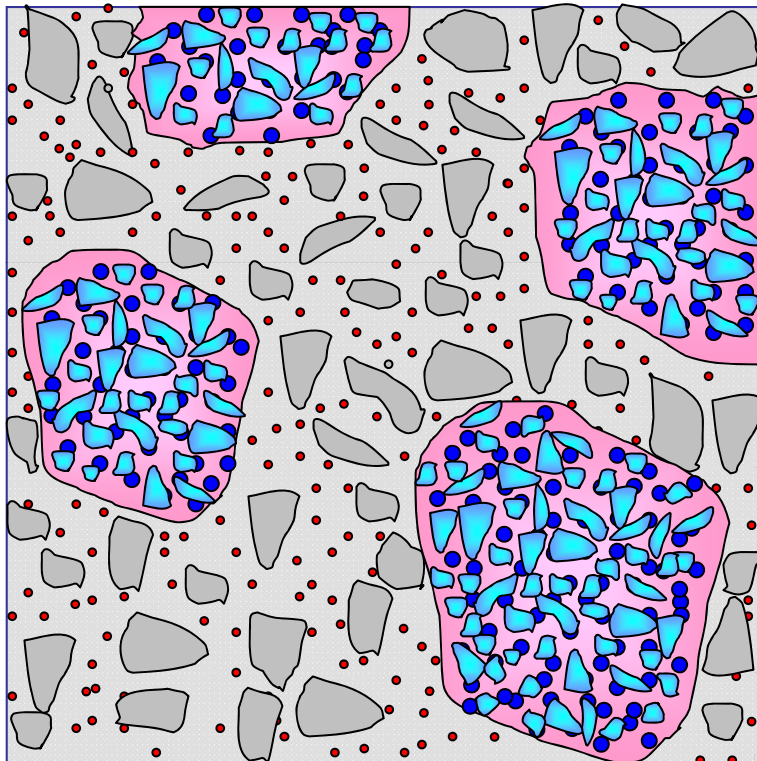
Average Overall Size, 17 μm

Special Surface Treatment used for better bonding to surrounding resin.



HDR = High Density Radiopaque

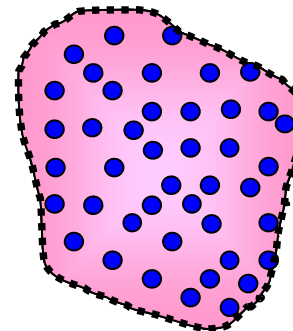
A New Improved Filler Phase



Prepolymerized Fillers Internal Nano Particles

400 nm Strontium Glass
60% by weight

100 nm Lanthanoid Fluoride
20% by weight



Lanthanoid fluoride glass allows for effective transmission of light to achieve translucency while blocking x-rays for enhanced radiopacity.

Special Surface treatment used for improved bonding to surrounding resin.

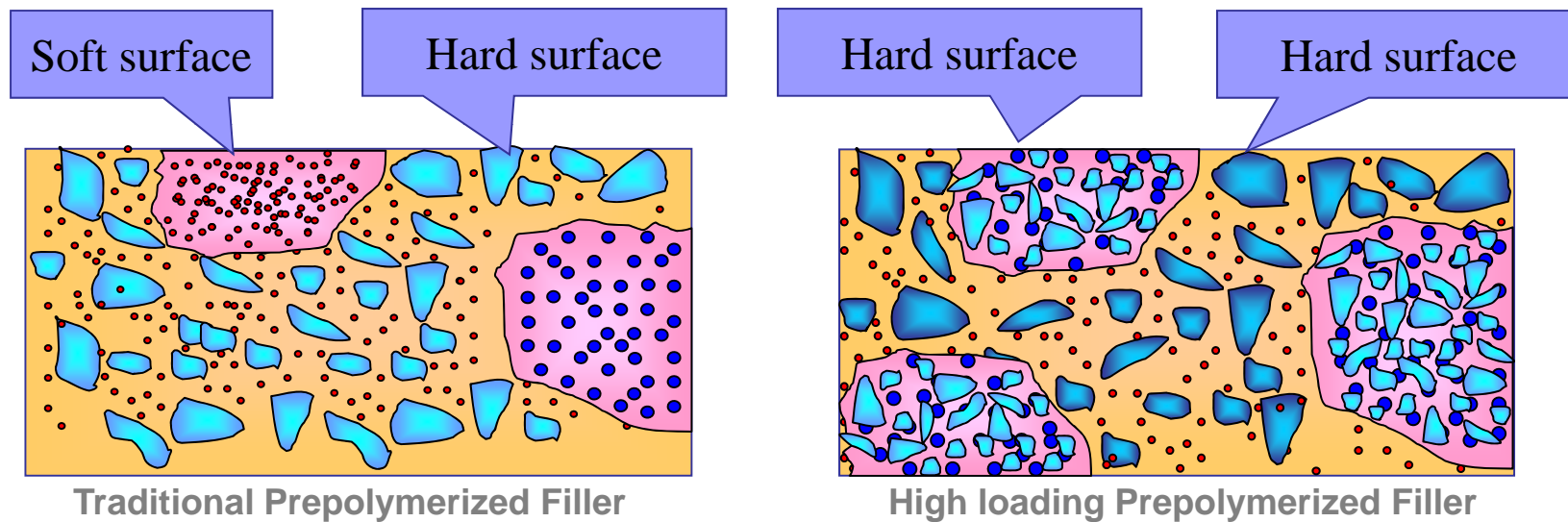


Resin = 20% by weight

Version Edited
01/10/2010

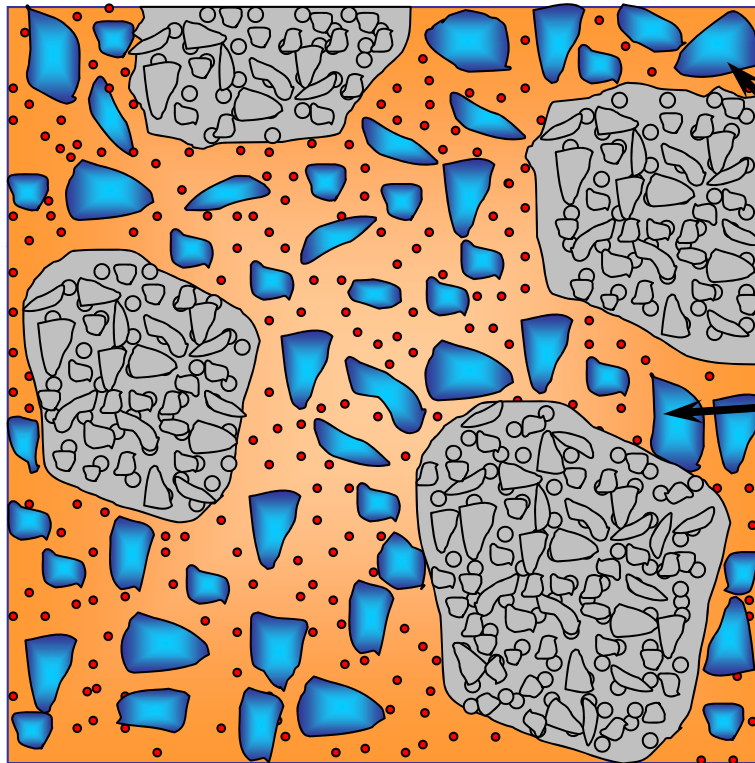
13

Wear Resistance



High loading Prepolymerized fillers provide better wear resistance than traditional less loaded Prepolymerized fillers.

A New Improved Filler Phase



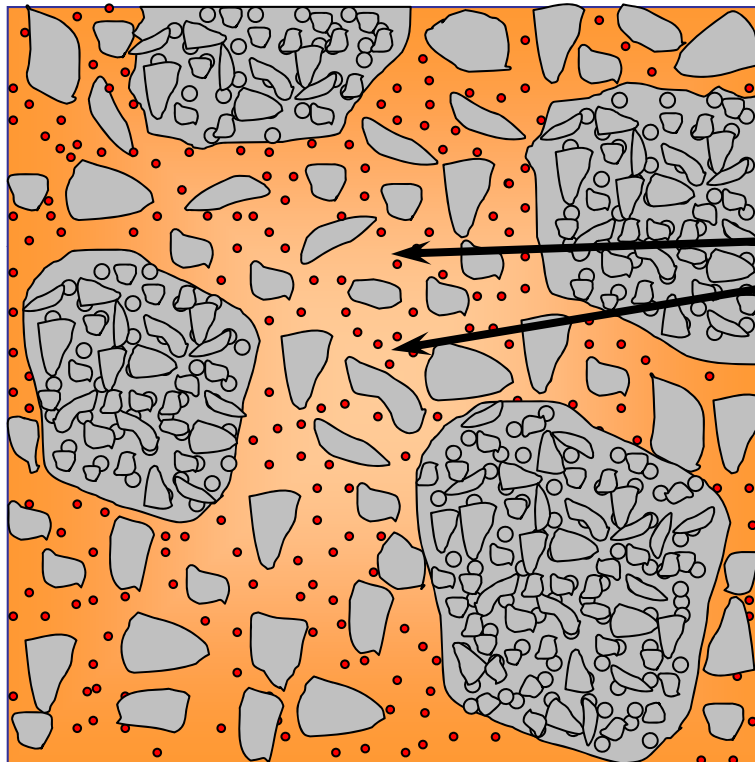
Glass Fillers

700 nm Strontium
Glass

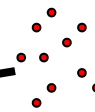
700 nm Fluoroaluminum
Silicate Glass

The modified strontium and fluoro aluminosilicate glasses have slightly different refractive indexes from each other for an improved chameleon effect.

A New improved Filler Phase



Nano Silica Filler



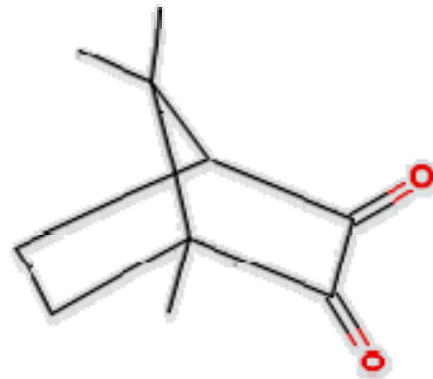
16 nm silica, mono-dispersed
for better wear resistance

**This improves the wear resistance of
the resin matrix.**

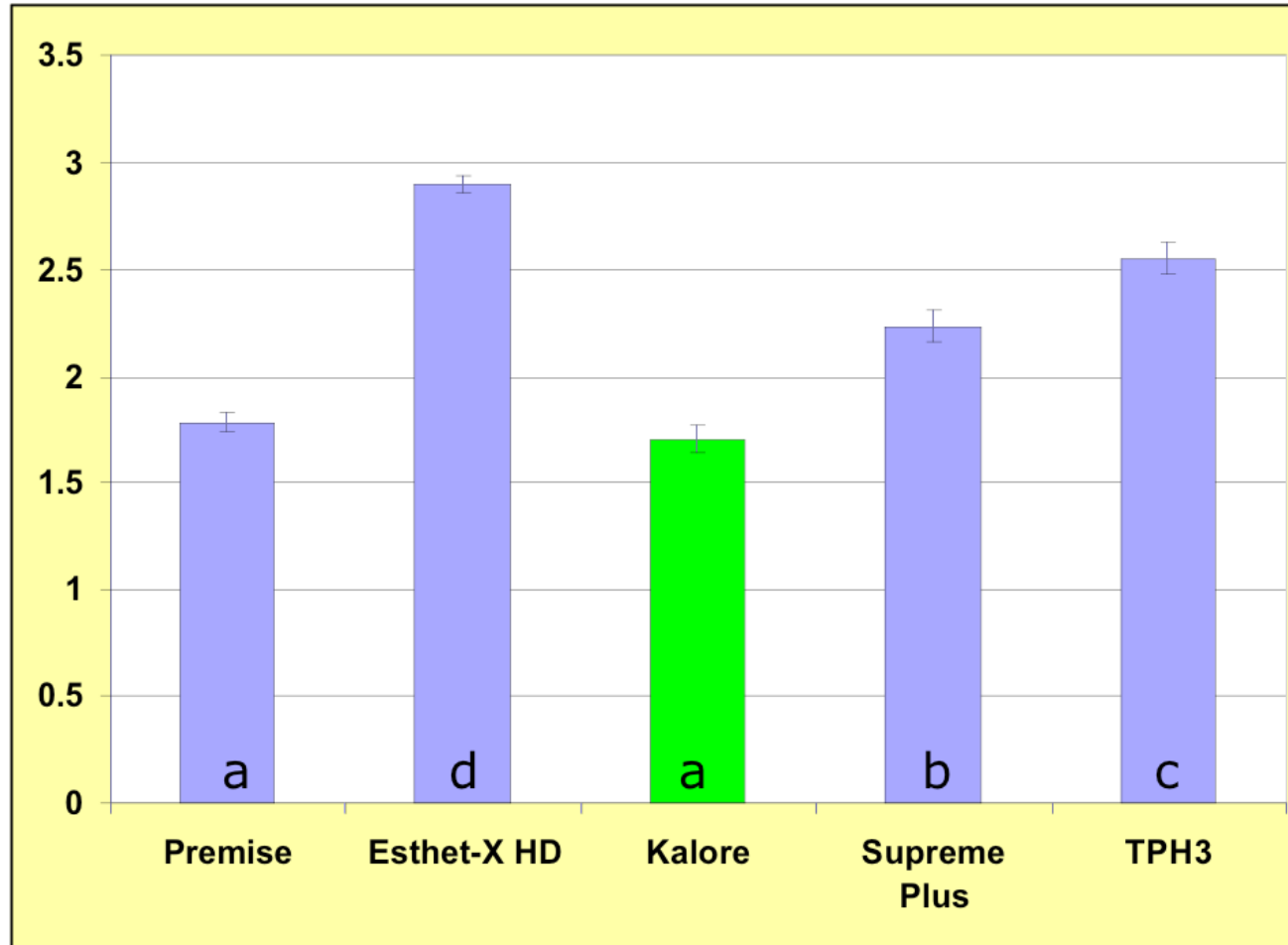
Photoinitiator

Camphorquinone (CQ)

- <1% by weight
- Spectral Curing range 400 – 500 nm
- Cures well with most standard Quartz Halogen Tungsten (QHT), PAC and LED Curing lights



Volumetric Shrinkage (%)



KALORE™ has one of the lowest % volumetric shrinkage of all composites tested.

Protocol:

Shrinkage at 60 minutes by mercury dilatometer (ADAHF).

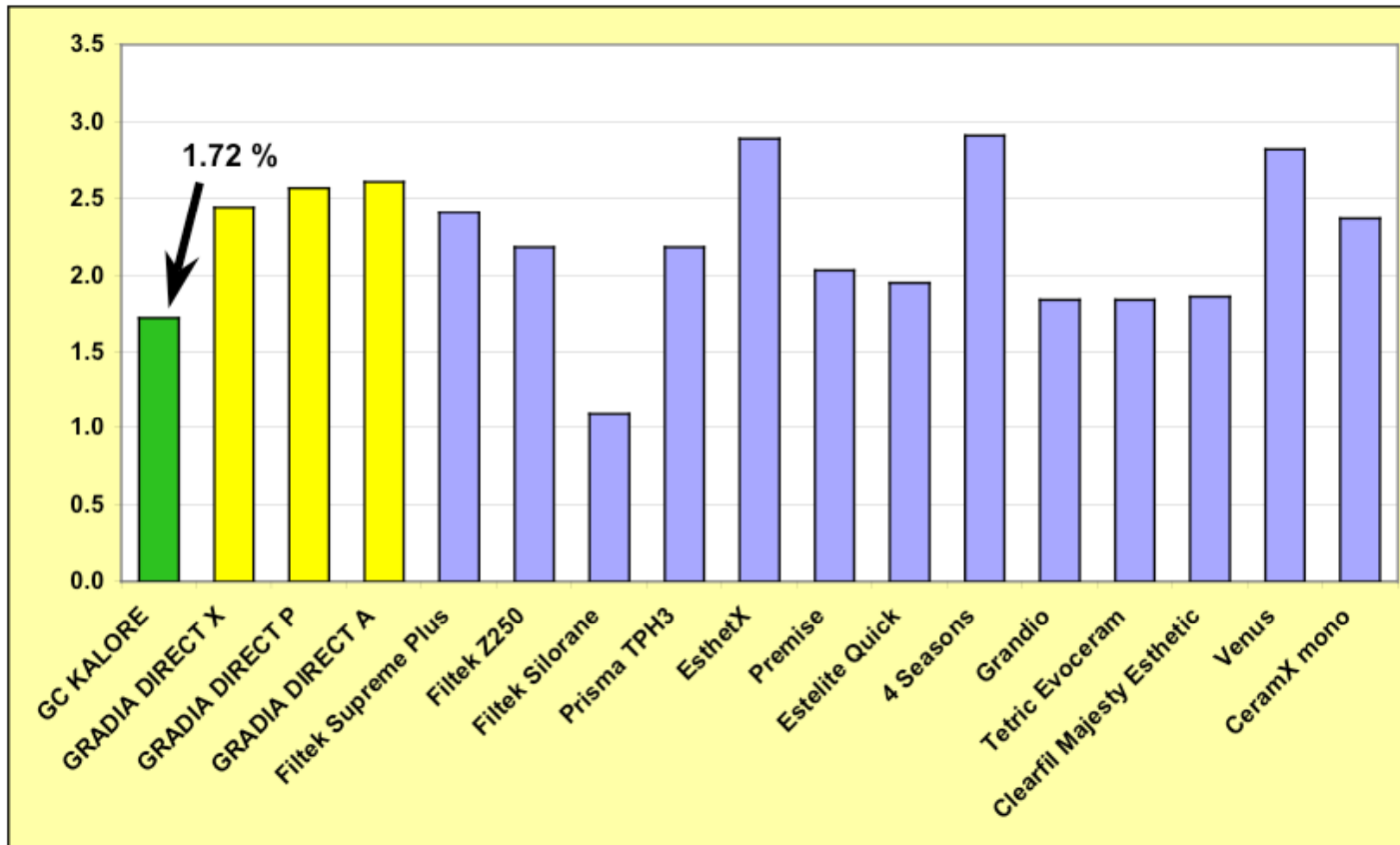
Volumetric Shrinkage (1 hour, Mercury dilatometer; n=3)

Means with the same lower case letter are not significantly different (1-way ANOVA/Tukey's; $p = 0.05$).



Source: Dr Jack Ferracane, "Evaluation of the Volumetric Shrinkage, Fracture Toughness and Polymerization Contraction Stress of a New Dental Composite", March 2009

Volumetric Shrinkage (%)



KALORE™ has one of the lowest % volumetric shrinkage of all composites tested.

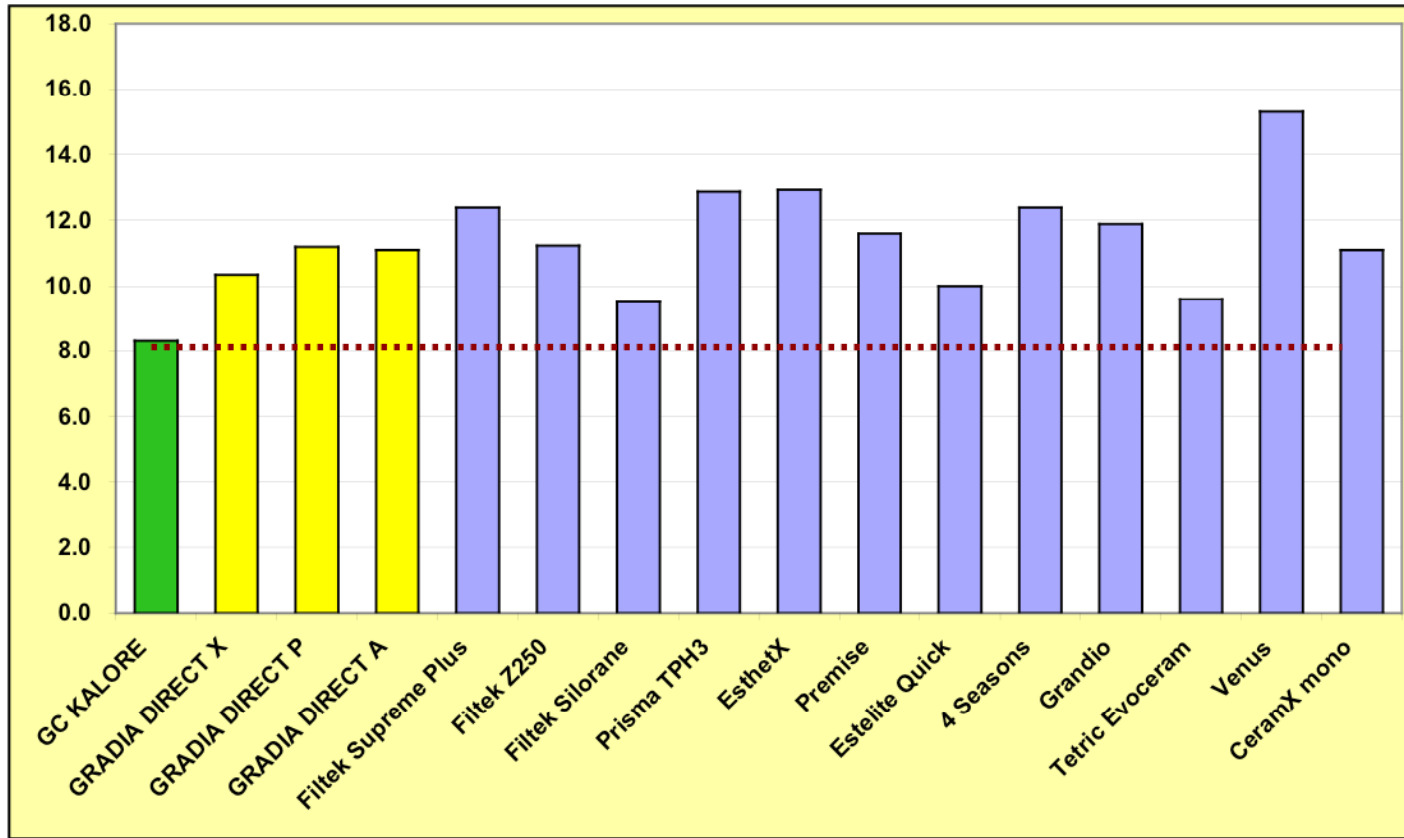
Protocol:
ISO Draft Date: 2007-07-10
Dentistry - Polymerization shrinkage of filling materials.

Shrinkage Stress is Key

- During polymerization: resin matrix reduces in volume while fillers retain its volume.
- Stress within the cured composite can lead to early displacement of fillers.
- This is called Shrinkage Stress.

Shrinkage Stress, N

(N)

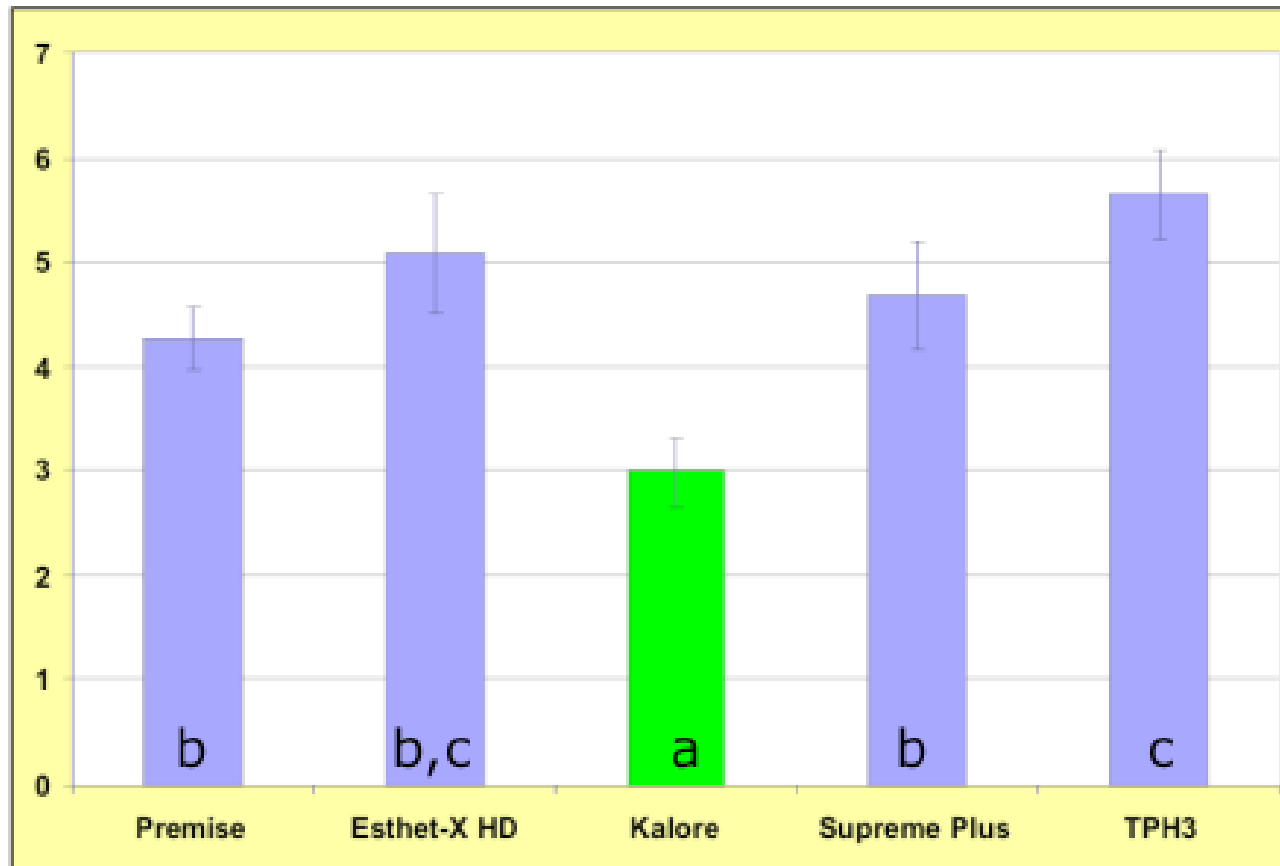


KALORE™ demonstrated the lowest shrinkage stress of all competitive products tested.

Protocol:
 Attach the jig on the universal test machine EZ-S (Shimadzu). Sandblast the slide glass surface and silane coupling treatment. Attach this slid glass on the jig. Place 1.66ml composite resin on the lower slide glass at the jig. Down the upper jig for 4 mm clearance from lower slide glass. Light cure 40 second from bottom side with GC G-light with 11 mm fiber rod. Light cure 20 second from top with GC G-light with 11 mm fiber rod. Measure 20 minutes and record highest load as shrinkage force.



Shrinkage Stress, MPa



KALORE™ had significantly lower polymerization contraction stress than all of the other composites.

Protocol:

Contraction stress at 5 minutes using the Bioman cantilever device (Watts et al., 2003).

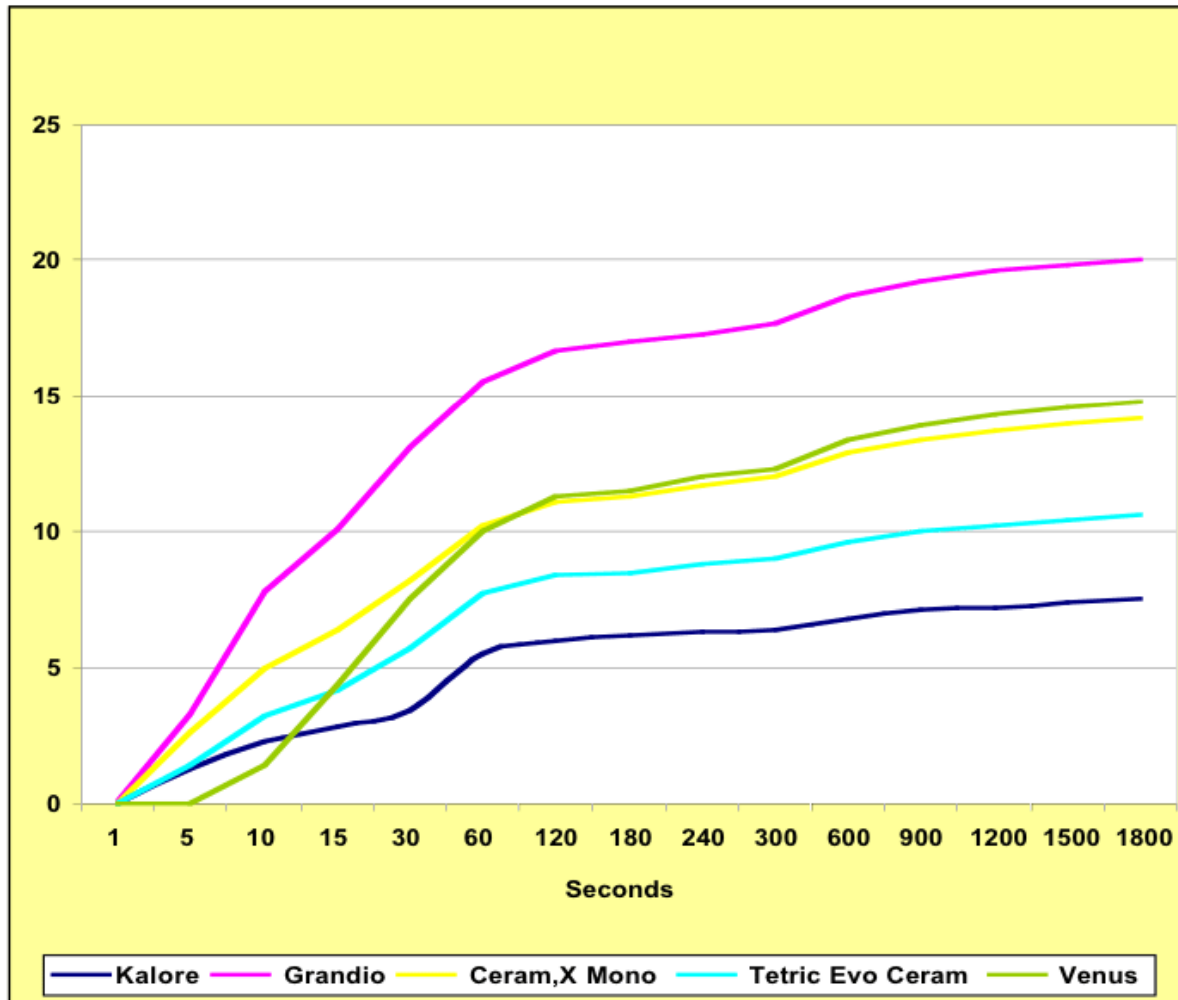
Contraction Stress (5 minutes after light cure; Bioman; n=5)

Means with the same lower case letter are not significantly different (1-way ANOVA/Tukey's; $p = 0.05$).

Source: Dr Jack Ferracane, "Evaluation of the Volumetric Shrinkage, Fracture Toughness and Polymerization Contraction Stress of a New Dental Composite", March 2009



Volumetric Shrinkage, Time



KALORE™ recorded the lowest volumetric shrinkage (over time) of all competitive products tested.

Protocol:

Measurements were continuously recorded using a mercury dilatometer. Composite was applied to the bottom surface of a glass stopper, which was then inserted into the mercury of the dilatometer. The sample was light-cured through the glass for 40 seconds with an Elipar Highlight (750 mW/cm²). Shrinkage was recorded for 4 hours at 23 ° C.

KALORE's Total Package



Benefit # 1: Superior handling-Complete Control is in Your Hands

- Non-sticky due to the patented HDR prepolymerized fillers.
- The DuPont monomer's stiff core and flexible arms create a putty-like property and makes it easier to spread.

Result: KALORE's unique properties allow for easy shaping and adaptation. KALORE is highly sculptable and non-slumping.



Photography and Dentistry by douglas, TX



KALORE's Total Package



Benefit # 2: Unsurpassed Aesthetics – Flawless Beauty, So Easy to Create.

- Exceptional gloss
 - Easy polishability
 - Sustained luster
- } Lower shrinkage stress allows for less risk of filler dropout.
- Chameleon effect : Optimized refractive index of the filler and matrix result in near perfect matching.

Result: Unmatched aesthetic success and perfect restorations.

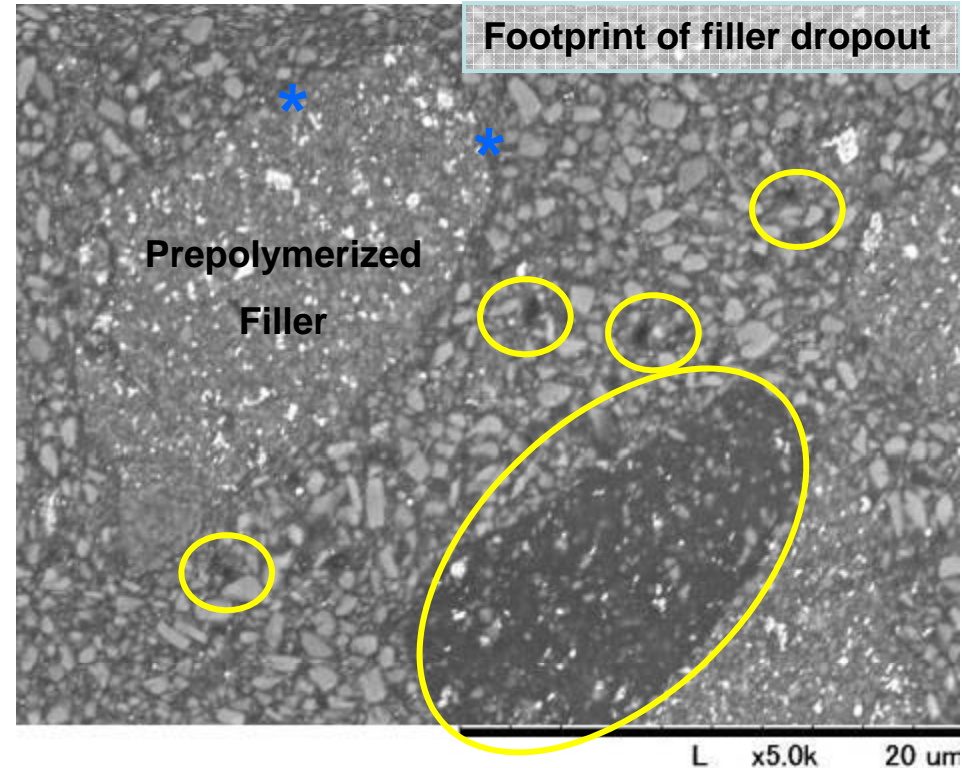
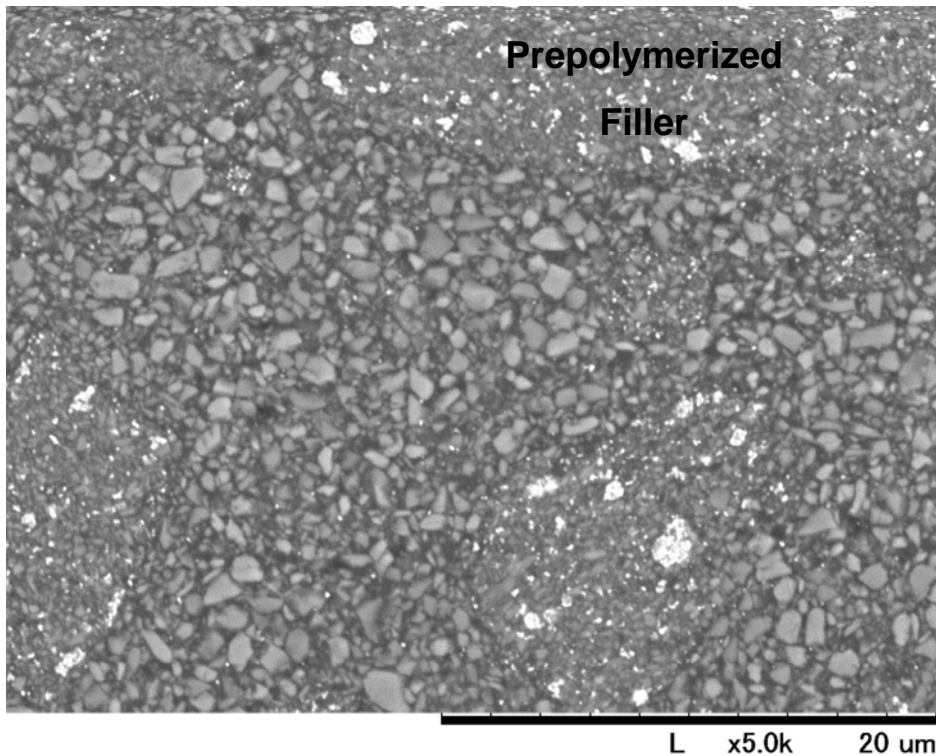


KALORE's Total Package



KALORE with DuPont monomer

KALORE with conventional monomer



**No gap on prepolymerized filler interphase.
No dropout fillers were observed.**

Gap on prepolymerized filler interphase: *
Dropout of fillers: ○

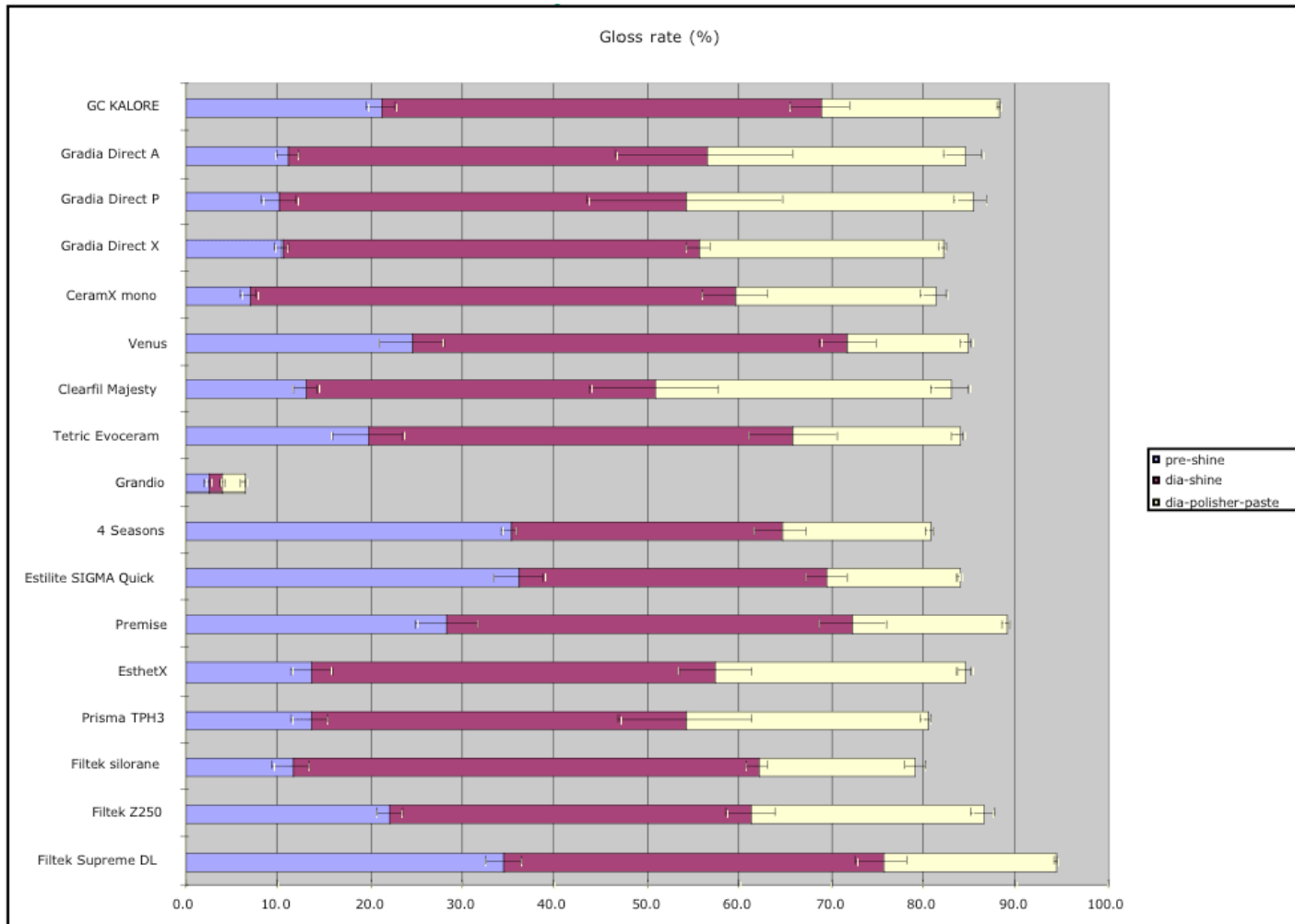
Source: GC Corp. R & D



Protocol: Prepare 15mm diameter and 1.5mm thick. Grind the surface by 600 grid paper. Polish the surface 2 minutes by Pre-Shine. Measure the surface gloss rate. Polish the surface 2 minutes by Dia-Shine. Measure the surface gloss rate. Polish the surface 2 minutes by Dia Polisher paste.

Version Edited
01/10/2010

Surface Gloss, %



KALORE™ was found to have a gloss rate among the highest of all materials tested.

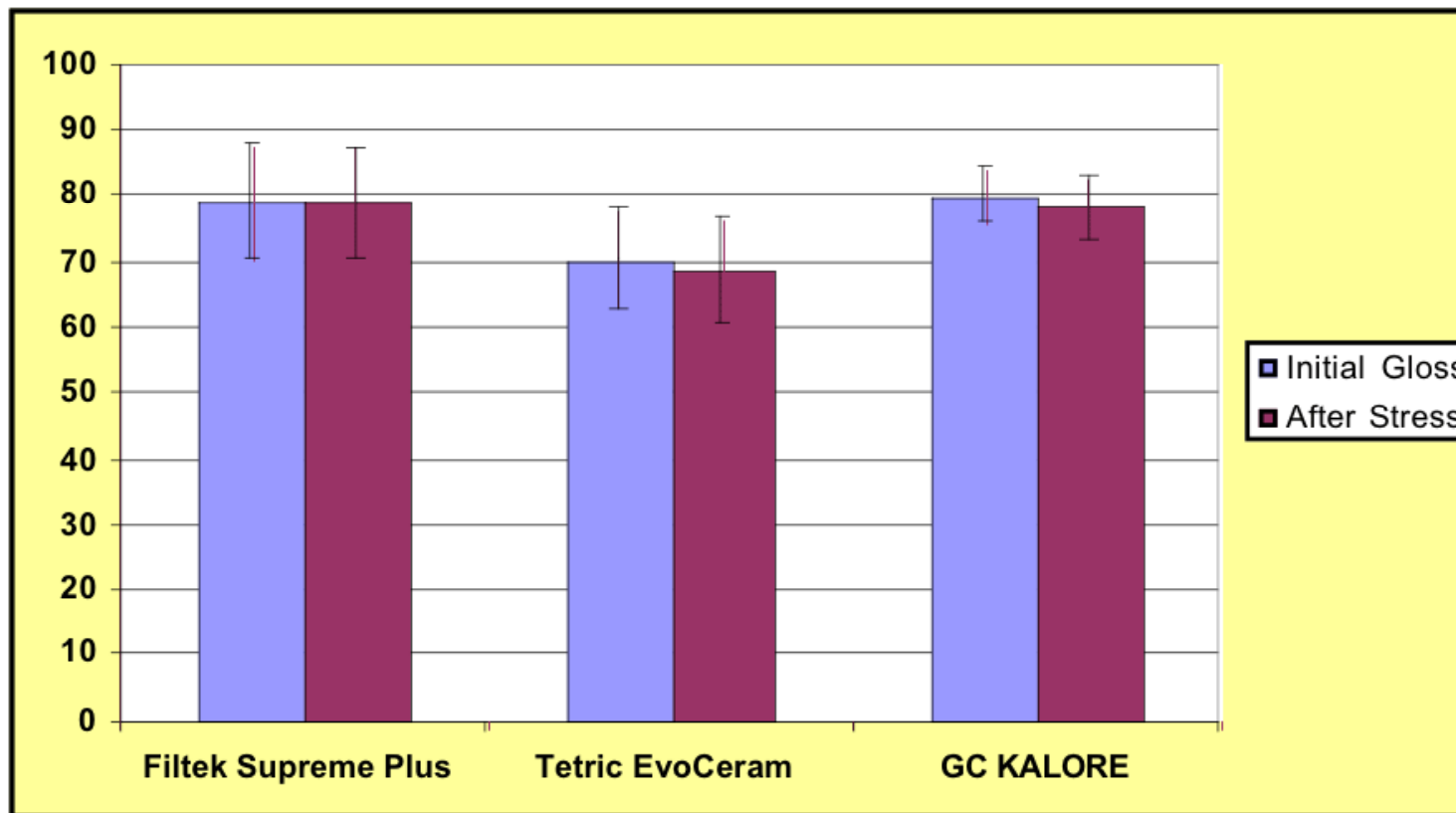
Protocol:
 Prepare 15mm diameter and 1.5mm thick. Grind the surface by 600 grid paper. Polish the surface 2 minutes by Pre-Shine. Measure the surface gloss rate. Polish the surface 2 minutes by Dia-Shine. Measure the surface gloss rate. Polish the surface 2 minutes by Dia Polisher paste. Measure the surface gloss rate with a VG-2000, Nippon Denshoku.



➔ Better

Source: GC Corp. R & D

Surface Gloss Retention, %

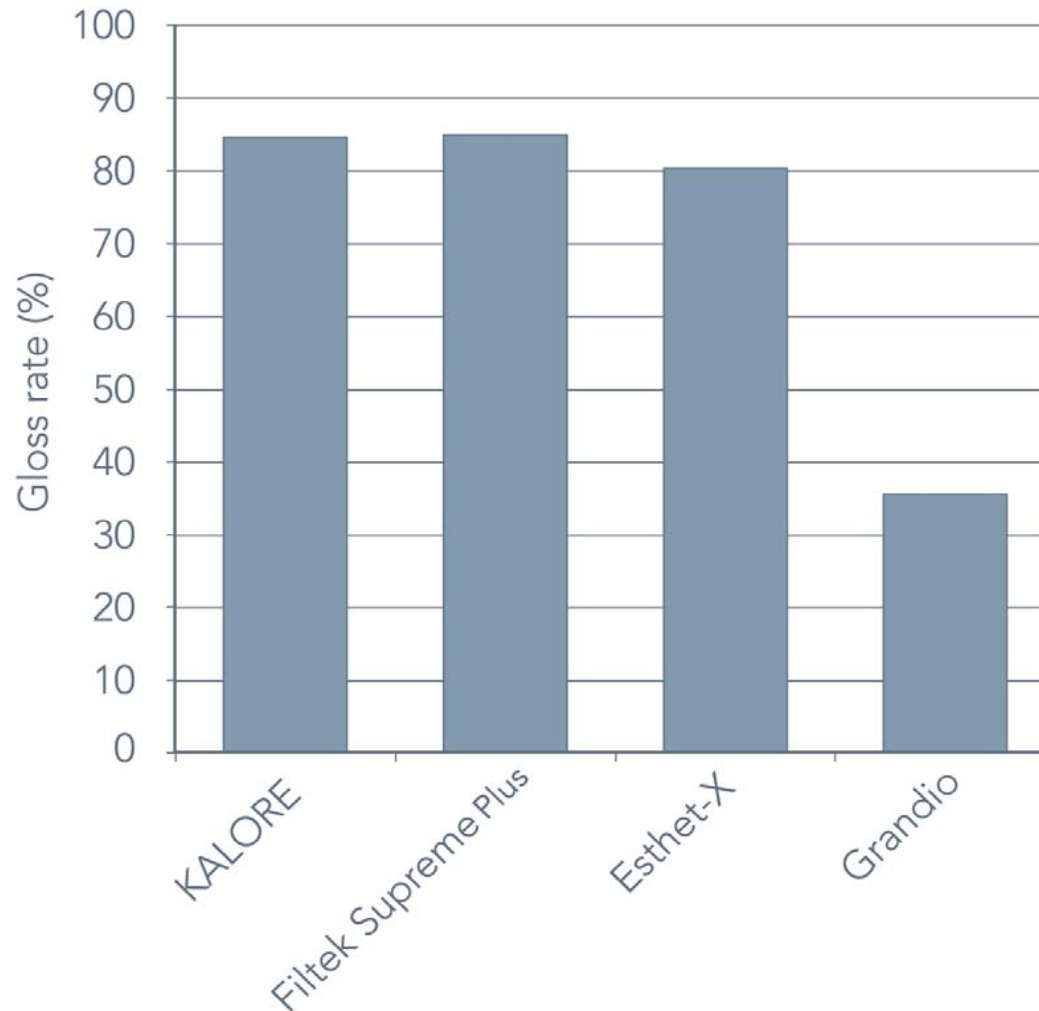


KALORE™ has surface gloss retention consistent with other composites tested.

Protocol:

- Composite specimens were prepared in the acrylic mold shown in Fig.1. Sample surface were polished using #80, #180, #320, #600, #1000, #1500 and #2000 emery paper followed by buff with 1micron alumina. Surface gloss rate were measured after polish. Specimens were moved up and down along a 4 cm path at a rate of 30 strokes per minute and held in indirect contact with an acrylic plate under a load of 350 gf load and simultaneously, the sample holder slid horizontally along a 2 cm path at a rate of 30 strokes per minute.
- A mixture of PMMA and glycerol (1:1 vol%) was used as an intermediate abrasive. After 100,000 cycles (one complete lateral and vertical movement counts for one cycle), the surface gloss were measured.

Gloss Rate



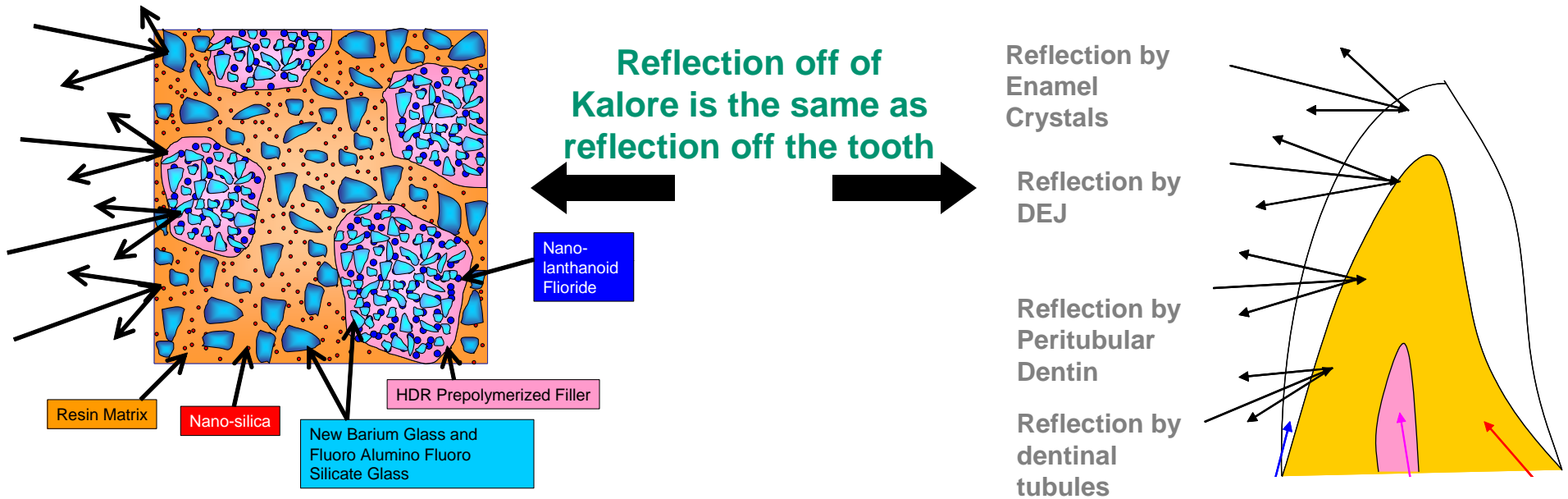
KALORE™ has among the highest Gloss Rates tested.

Protocol:

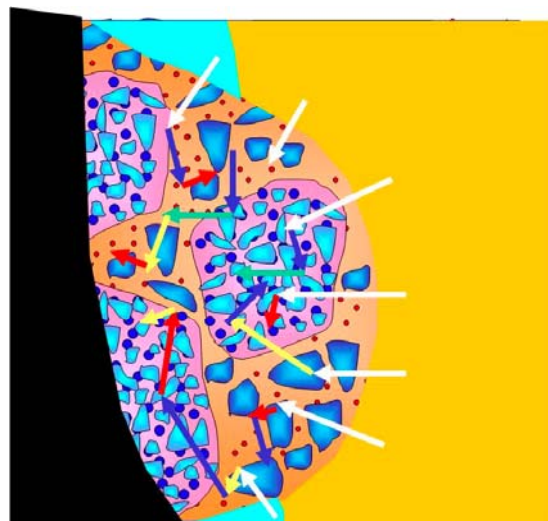
Prepare samples of 15mm diameter and 1.5mm in thickness. Grind the surface with #2000 grid paper. Polish the surface with PoGo. Measure surface gloss rate with a VG-2000, Nippon Denshoku.

InViz' Effect

KALORE™ has excellent chameleon properties because its different internal components reflect and refract light similarly to the way teeth do.



Diffused reflection in composite, and diffused reflection in tooth.



KALORE's Total Package



Benefit # 3: Significant Longevity and Durability Sustained Form and Function

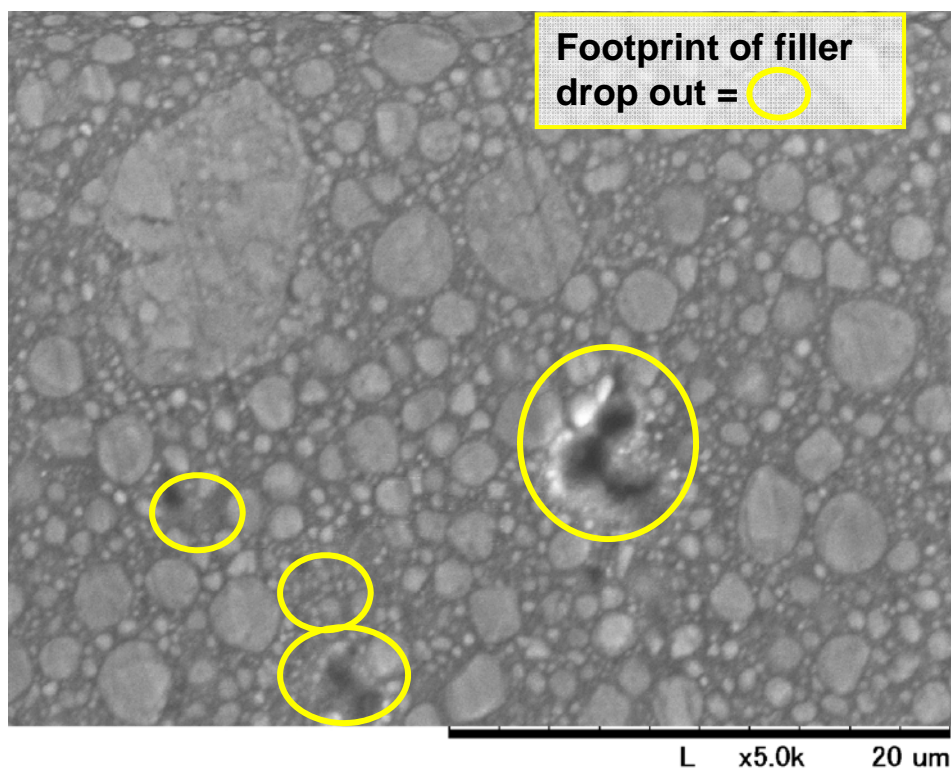
- The average restoration loses form, function and aesthetics in 3 to 4 years as the particles dropout due to shrinkage stress.
- Surface loses luster
 - Surface becomes rough
 - Surface picks up stains
 - Eventual wear and tear

Result: KALORE™ keeps your restorations lasting longer by maintaining their form and function over time.

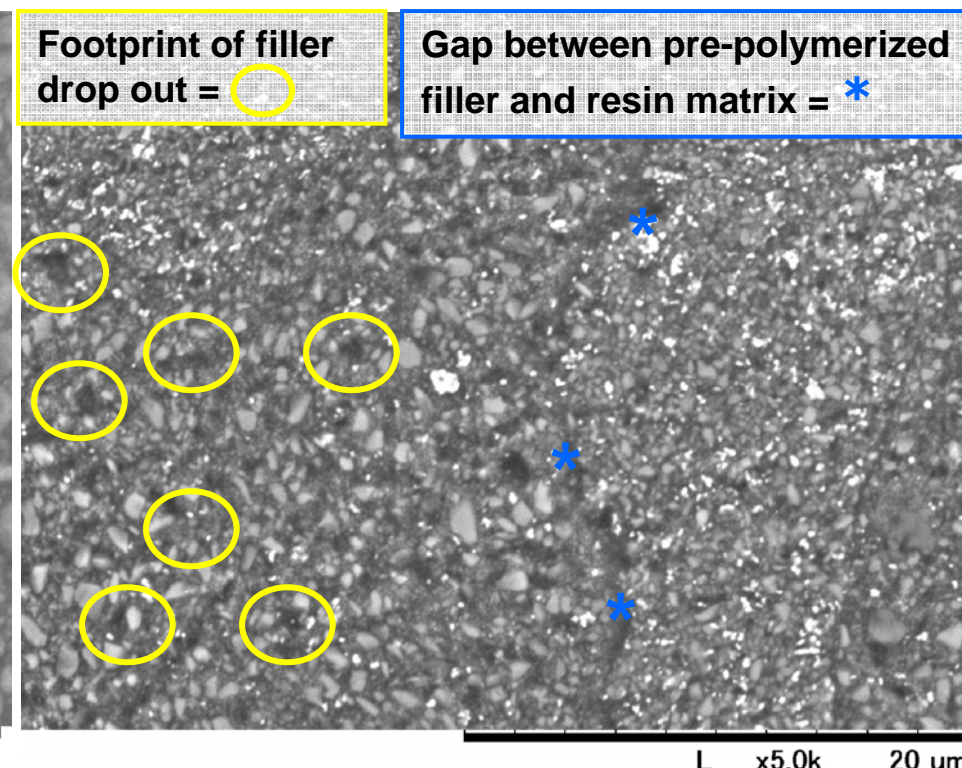


KALORE's Total Package

Filtek Supreme Plus



Tetric EvoCeram

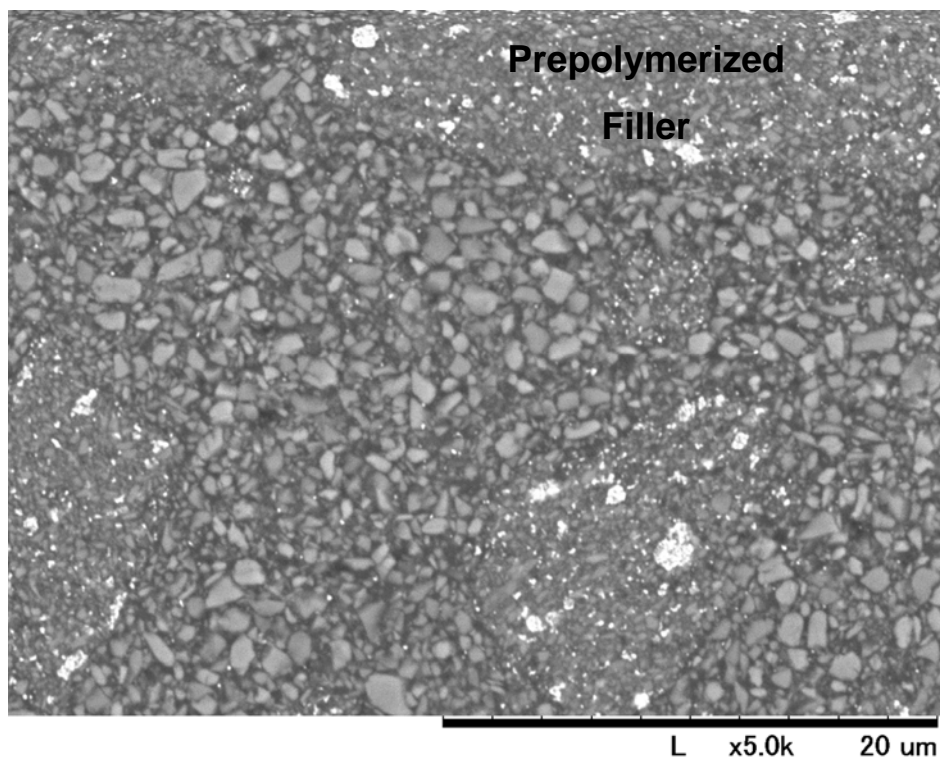


Protocol: Prepare 15mm diameter and 1.5mm thick. Grind the surface by 600 grid paper. Polish the surface 2 minutes by Pre-Shine. Measure the surface gloss rate. Polish the surface 2 minutes by Dia-Shine. Measure the surface gloss rate. Polish the surface 2 minutes by Dia Polisher paste.

KALORE's Total Package



KALORE™



KALORE's low shrinkage stress means less stress around the fillers and minimizing filler dropouts. The result is better longevity and durability for your restoration.

**No gap on prepolymerized filler-matrix interphase.
No dropout fillers were observed.**

Protocol: Prepare 15mm diameter and 1.5mm thick. Grind the surface by 600 grid paper. Polish the surface 2 minutes by Pre-Shine. Measure the surface gloss rate. Polish the surface 2 minutes by Dia-Shine. Measure the surface gloss rate. Polish the surface 2 minutes by Dia Polisher paste.

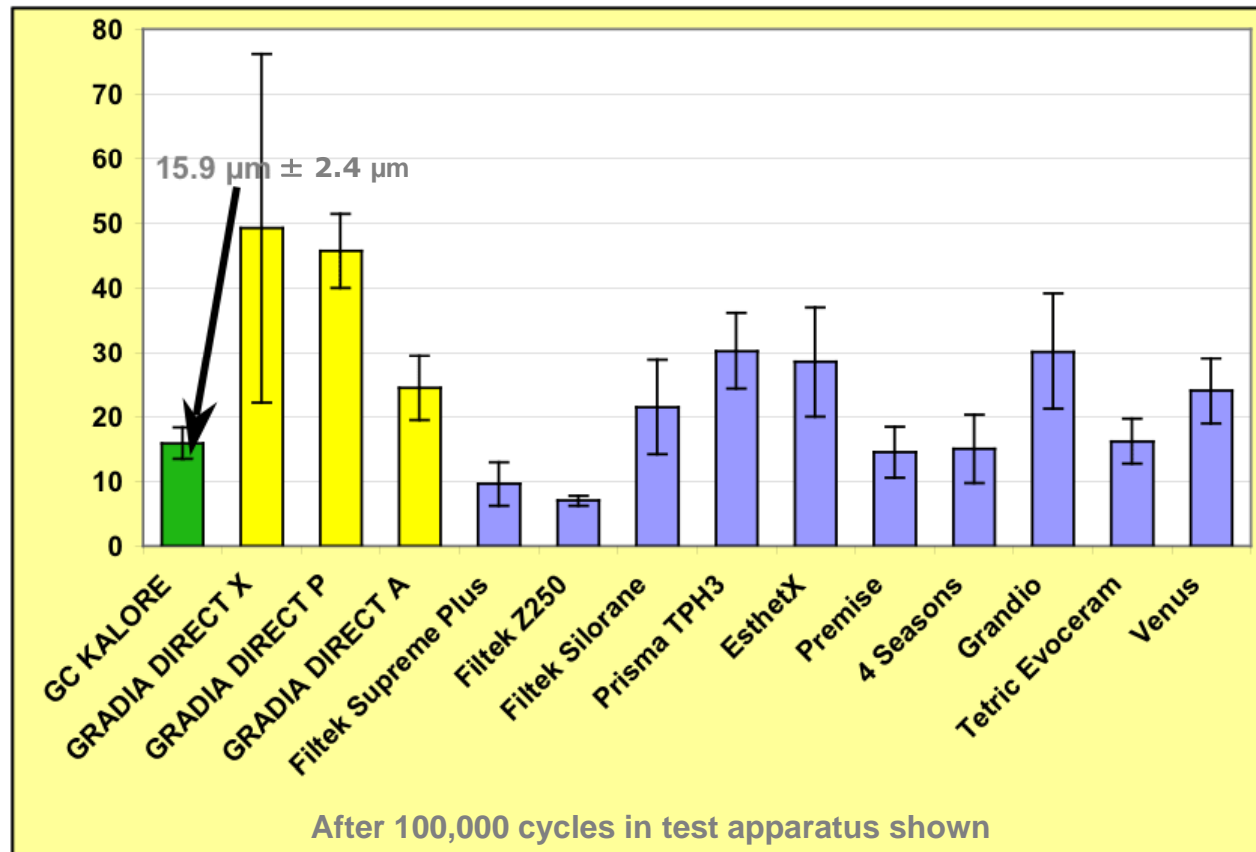


Source: GC Corp. R & D

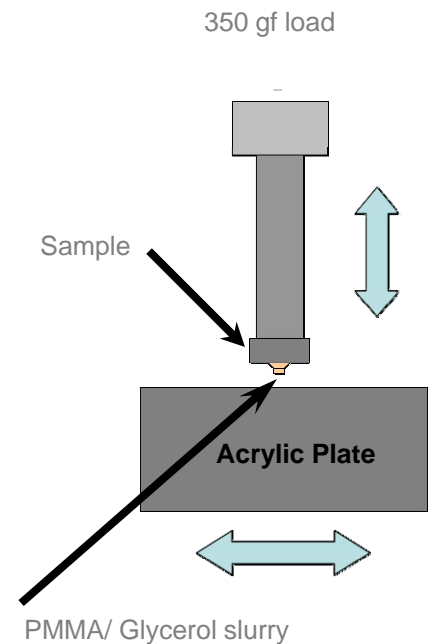
Version Edited
01/10/2010

33

Three body wear test, μm



KALORE™ has a very high resistance to 3-Body wear.

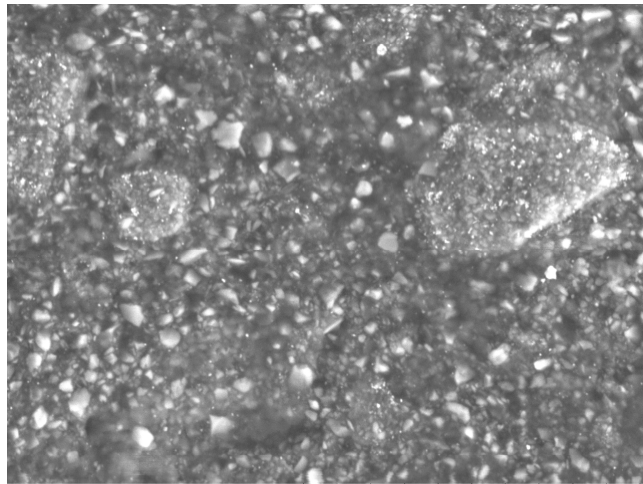


Protocol:

- Composite specimens were prepared. Specimens were moved up and down along a 5 cm path at a rate of 30 strokes per minute and held in indirect contact with an acrylic plate under a load of 350 gf load and simultaneously, the sample holder slid horizontally along a 2 cm path at a rate of 30 strokes per minute. A mixture of PMMA and glycerol (1:1 vol%) was used as an intermediate abrasive. After 100,000 cycles (one complete lateral and vertical movement counts for one cycle), the material wear was measured. The material wear was evaluated by the height loss.
- After this test, samples of a selection of composites were processed for SEM image taking.

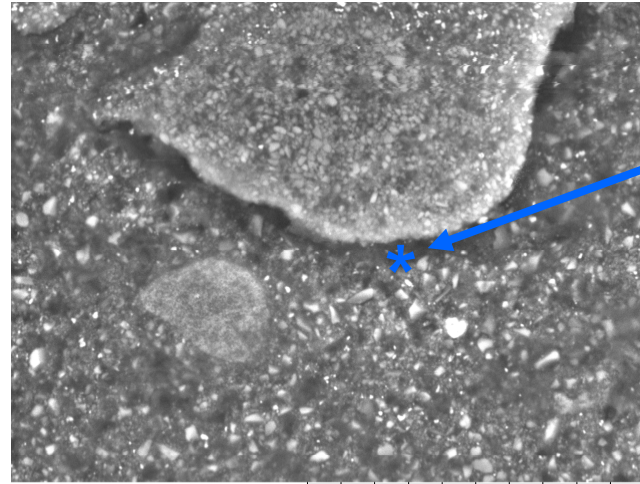


Three body wear test



KALORE™

L x5.0k 20 um

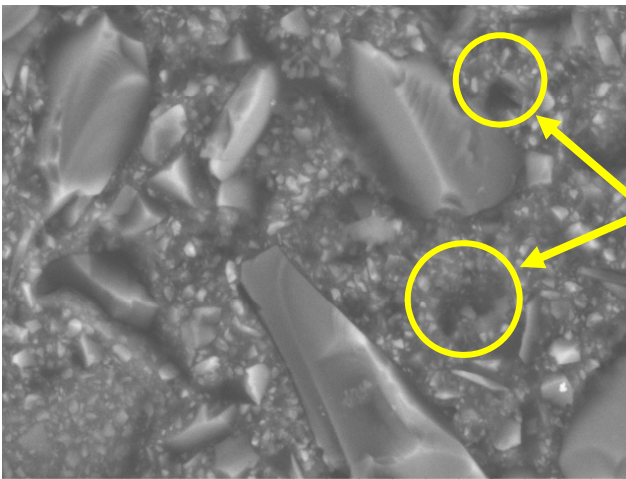


Tetric EvoCeram

L x5.0k 20 um

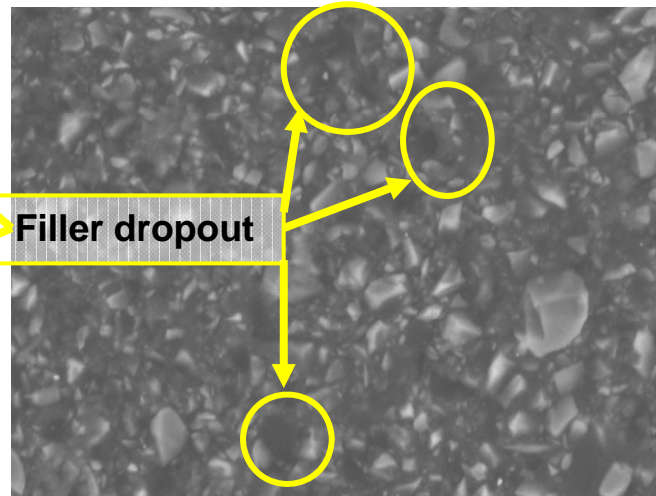
Gap at filler-matrix interphase

SEMs taken following 3-body wear tests show that KALORE™ retains excellent integrity between HDR prepolymerized filler and resin matrix. Other specimens show signs of particle loss and gaps between filler-matrix interphase.



Grandio

L x5.0k 20 um



TPH3

L x5.0k 20 um

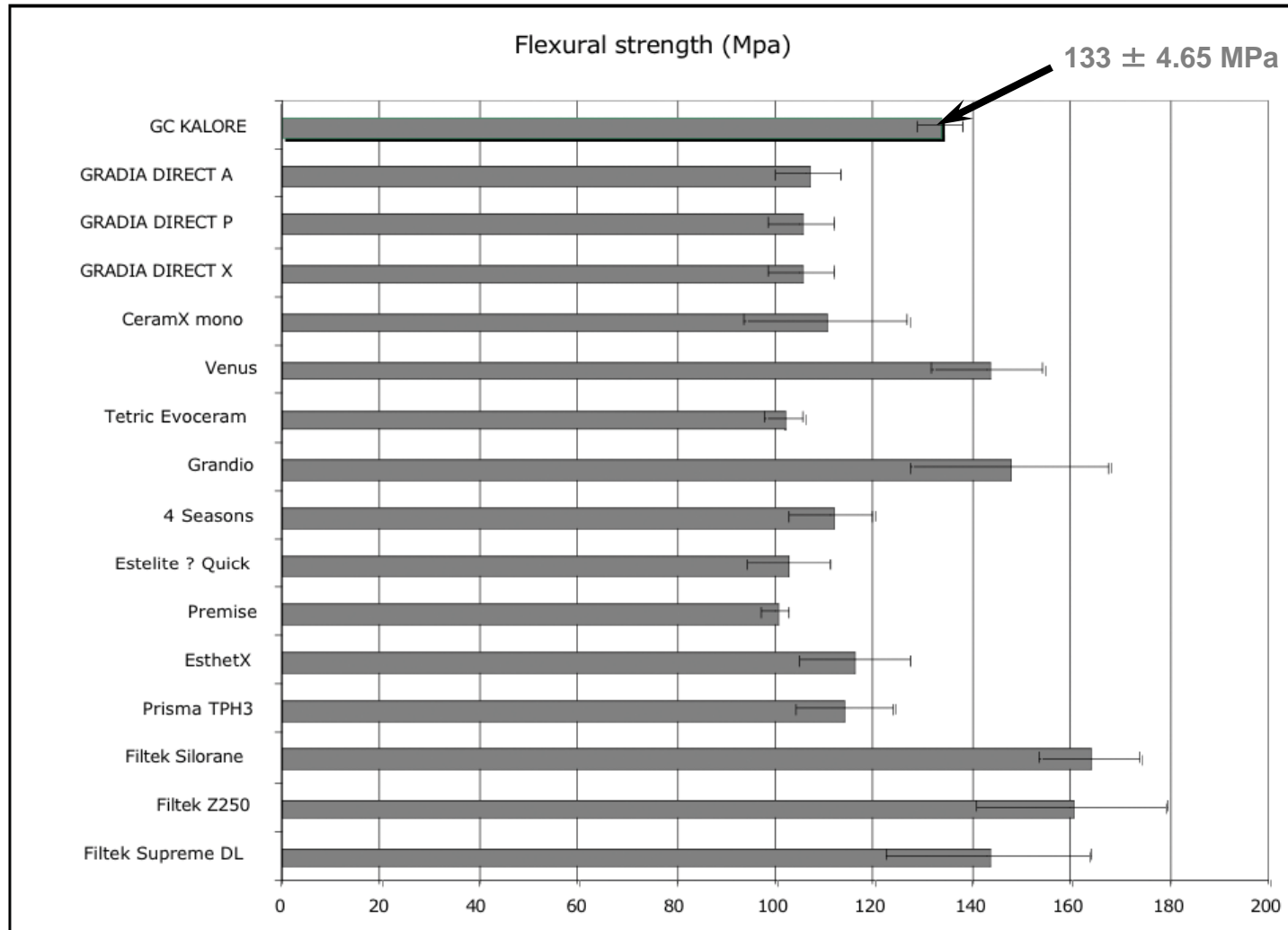
Protocol: Three-Body Wear Test, details on previous slide.

Additional Physical Properties



Flexural Strength
Fracture Toughness
Modulus of Elasticity
Radiopacity

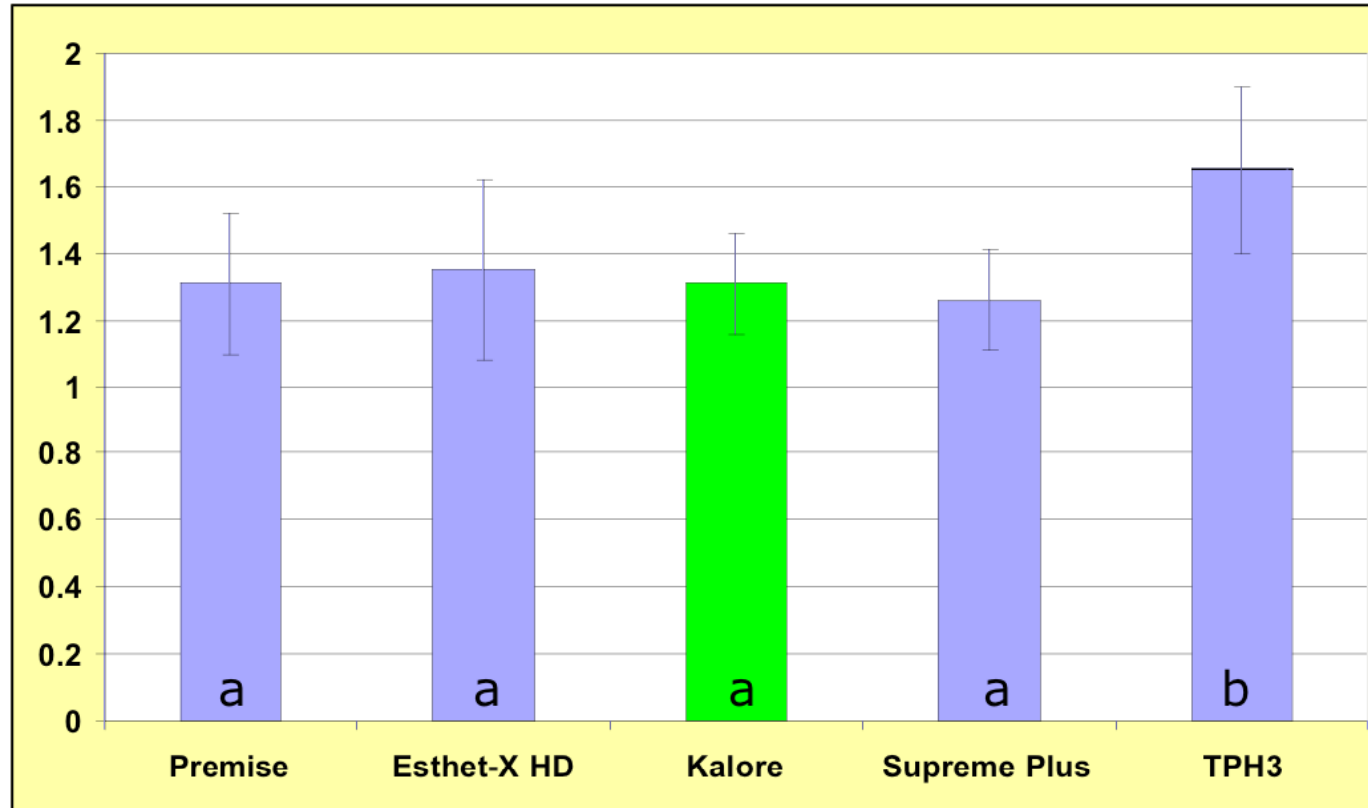
Flexural strength, MPa



KALORE™ demonstrates amongst the highest of Flexural Strengths.

Protocol:
ISO4049:2000

Fracture Toughness, MPa m^{1/2}



Protocol:

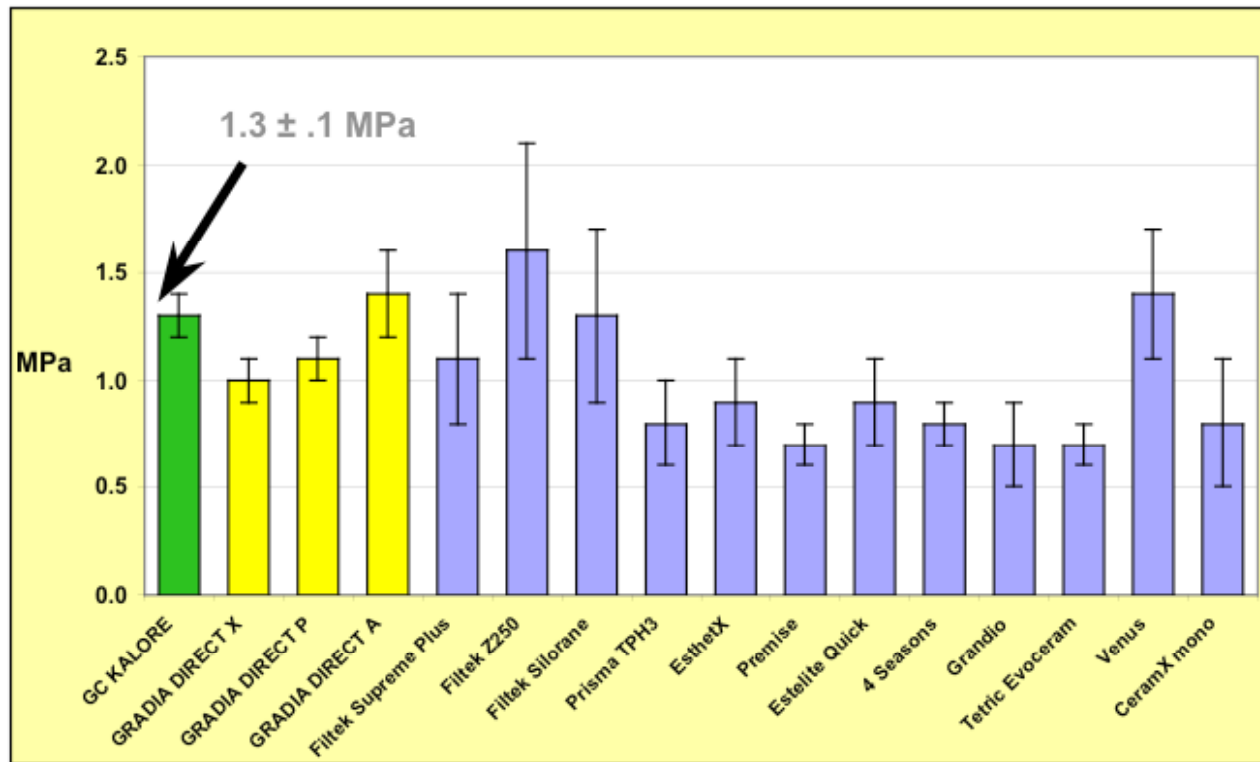
Single-edge notch fracture toughness in three-point bending according to ASTM-E399.

KALORE™ has fracture toughness consistent with other composites tested.

Fracture Toughness (24 hours; SEN; n=10)

Means with the same lower case letter are not significantly different (1-way ANOVA/Tukey's; p = 0.05).

Fracture Toughness, MPa

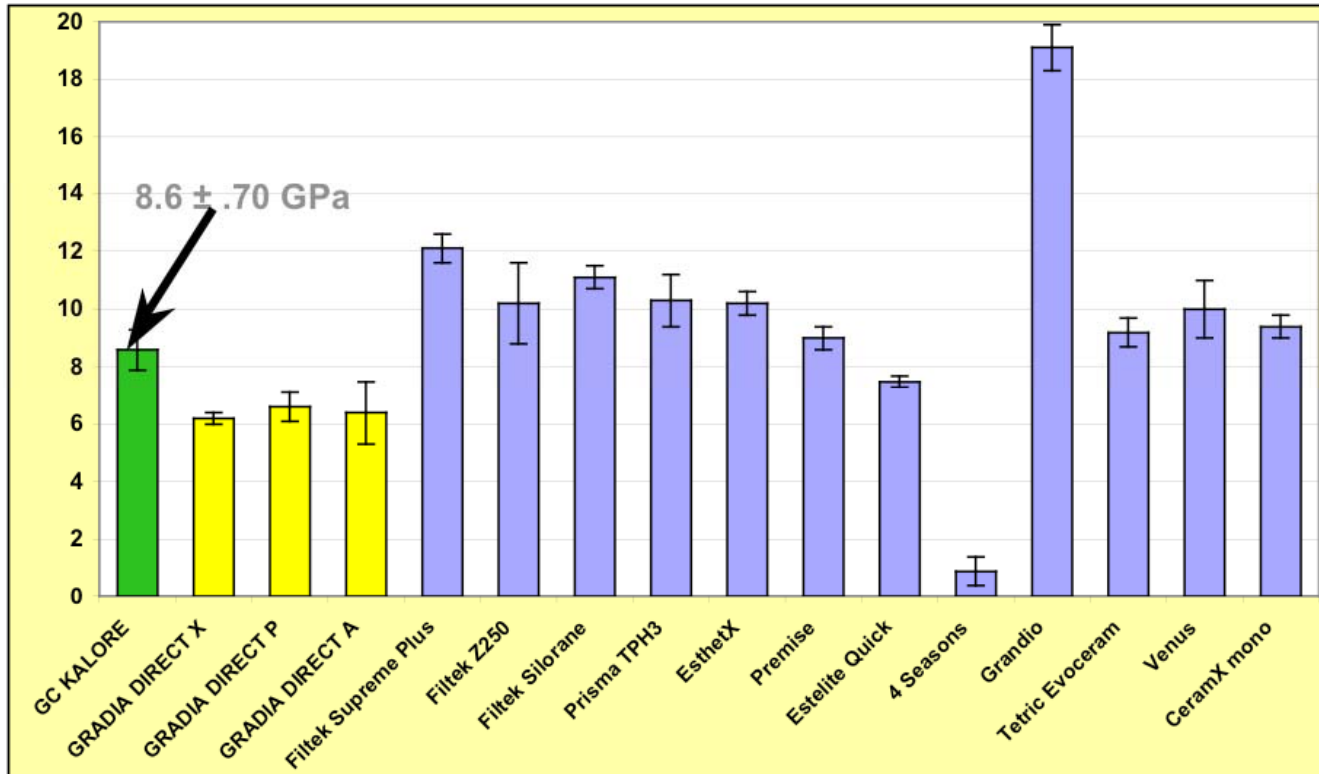


KALORE™ demonstrates excellent “Fracture Toughness”.

Protocol:

Test method is based on ISO4049:2000, Flexural strength test. Calculate total energy till sample break.

Modulus of Elasticity, GPa



Ideally a material should not have a modulus of elasticity that is too high since brittle materials are not efficient in buffering masticatory pressures.

KALORE™ has a Modulus of Elasticity that is not too high (and therefore too brittle), or too low (and therefore too elastic).

Protocol:

Test method is based on ISO4049:2000.

Radiopacity

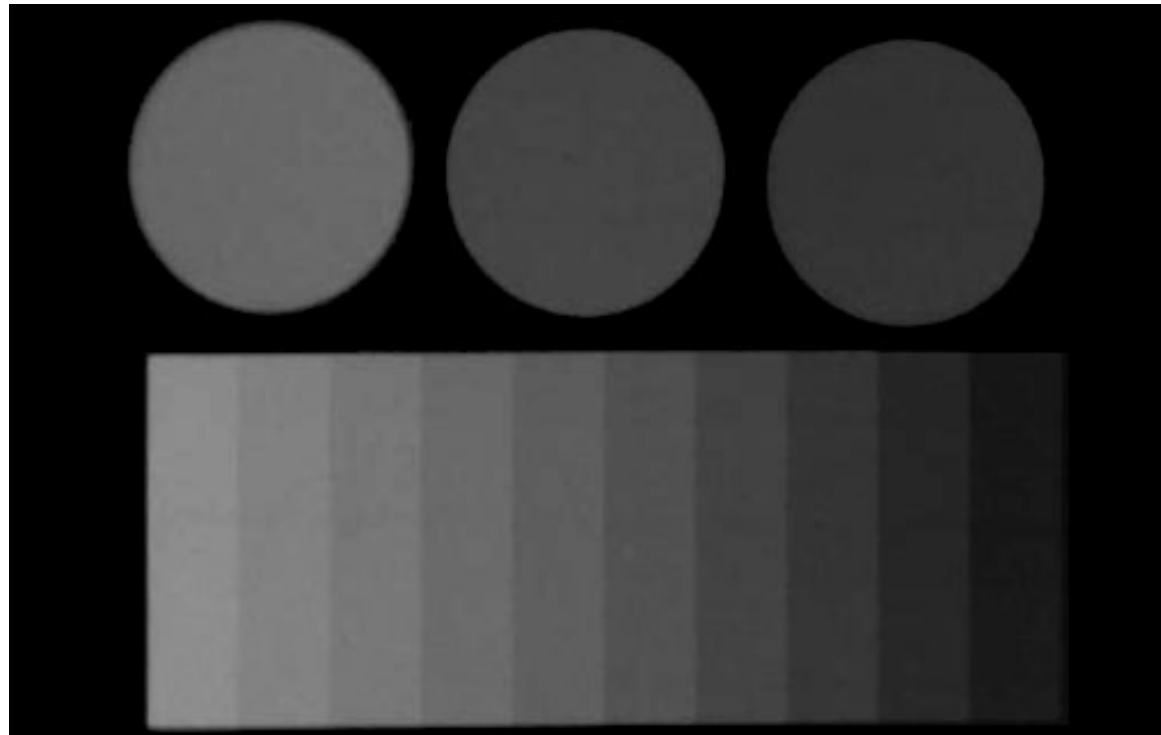
KALORE™ vs. Gradia Direct



KALORE™

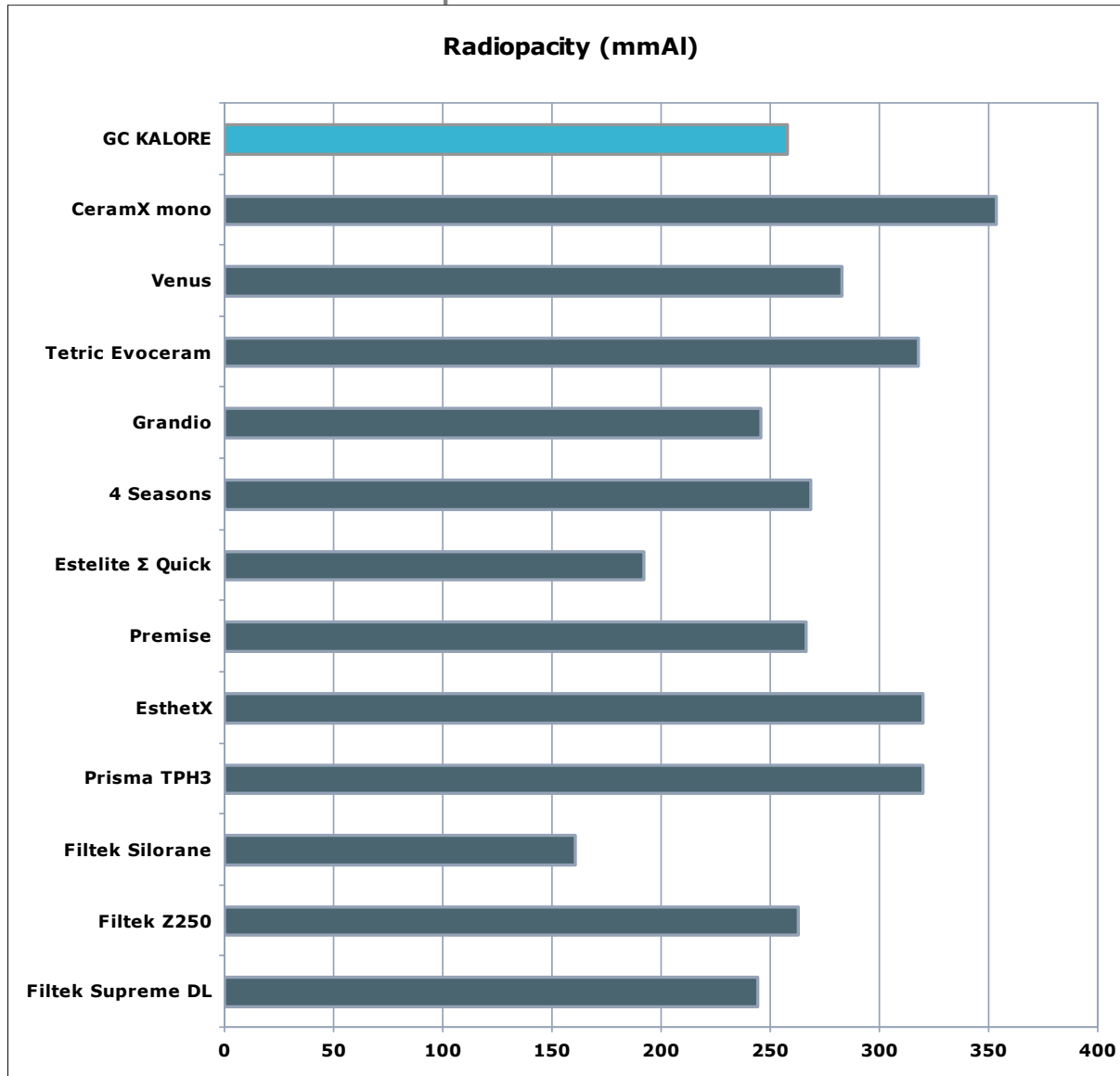
Gradia Direct X

Gradia Direct P



Radiopacity

KALORE™ vs. Competitors



KALORE™ has Excellent radiopacity compared to the other composites tested.



Shade System

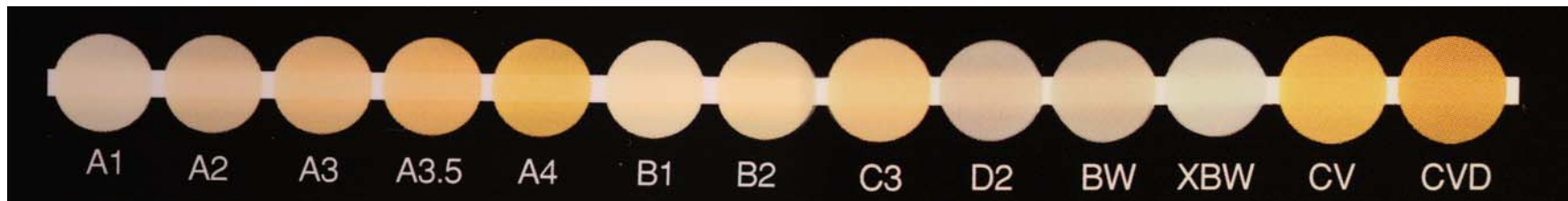


Universal
Translucent
Opaque

26 Total Shades in 3 Different Opacities

Universal Shades

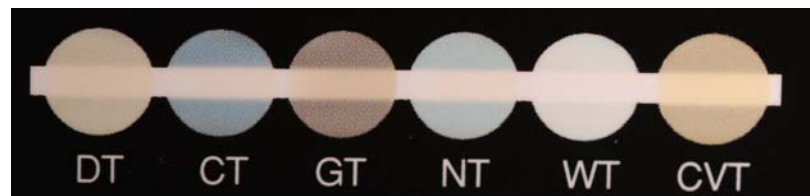
A1 A2 A3 A3.5 A4
B1 B2 B3
C2 C3
D2
CV = Cervical (B5)
CVD = Cervical Dark (B7)
BW = Bleaching White
XBW = Extra Bleaching White



Universal shades have a very delicate balance between value, translucency, hue and chroma and were developed for a single-shade layering technique. They are grouped into A (reddish-brown), B (reddish-yellow), C (Grey), D (reddish-grey), Bleach and Cervical shades.

Translucent Shades

- WT** (White Translucent)
- DT** (Dark Translucent)
- CT** (Clear Translucent)
- NT** (Natural Translucent)
- GT** (Gray Translucent)
- CVT** (Cervical Translucent)



The translucent shades provide the ability to give more “life” to the final restoration, and to mimic the value and age-dependent enamel changes. Due to the uniqueness of these shades a correlation to Vita Shades is not possible and the GC KALORE shade guide should be used.

Opaque Shades (Dentin)

AO2

AO3

AO4

OBW (Opacious Bleach White)

OXBW (Opacious Extra Bleach White)



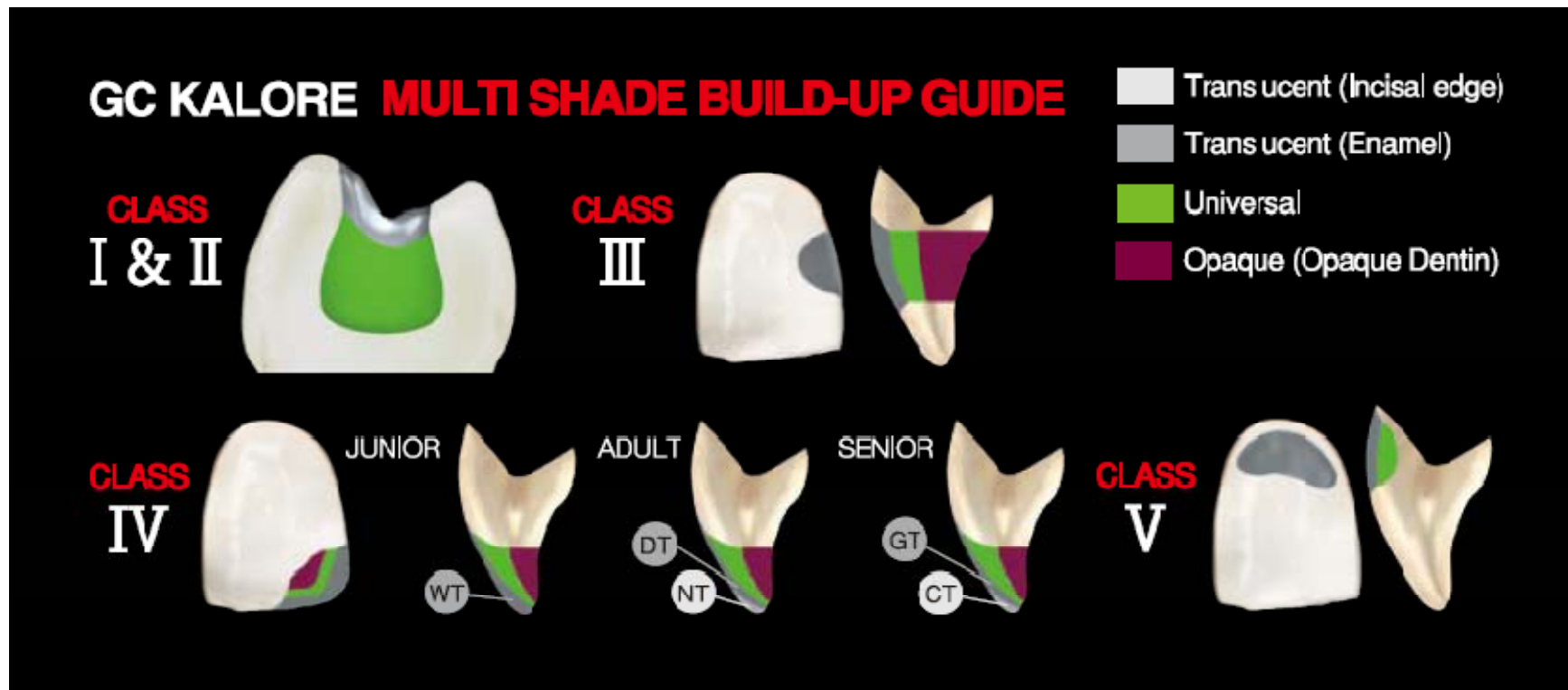
KALORE's Opaque shades are available as AO2, AO3, AO4, OBW and OXBW. Their increased opacity prevents light from the oral cavity being transmitted through the restoration, which would result in a darker appearance

Polychromatic Stratification

Suggested Shade Combinations for multiple layers in deep and/or large cavities.

	A1	A2	A3	A3.5	A4	B1	B2	B3	C2	C3	D2	CV	CVD	BW	XBW
Opaque	OBW	AO2	AO3	AO3	AO4	OBW	AO2	AO3	AO3	AO4	AO2	AO4	AO4	OBW	OXBW
Universal	A1	A2	A3	A3.5	A4	B1	B2	B3	C2	C3	D2	CV	CVD	BW	XBW
Translucent	WT	WT	DT	DT	DT	WT	WT	DT	DT	DT	WT	DT	DT	WT	WT
Incisal	CT	NT	NT	NT	GT	CT	NT	NT	NT	GT	CT	CVT	CVT	CT	CT

Multi shade Build-up Guide



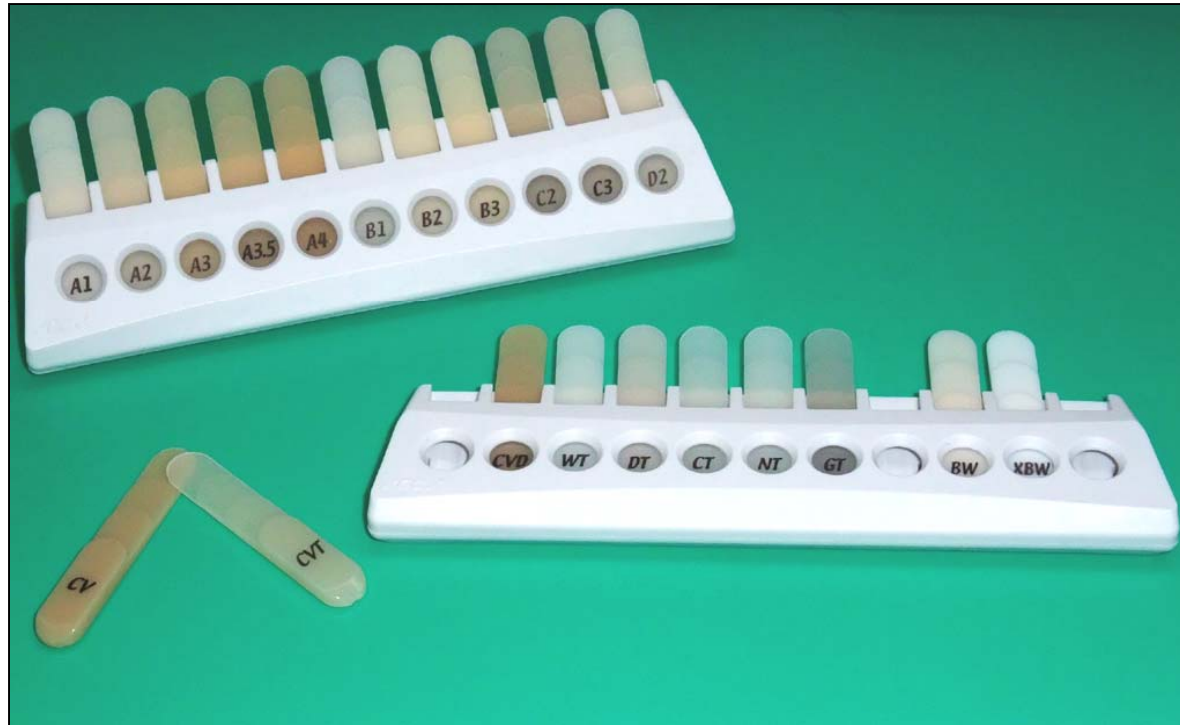
Included with Trial Kits

(Trial Kits contain 3 shades - A1, A2 and BW)

Curing Times and Effective Depth of Cure

Curing Light Source	Curing Time, Seconds	Curing Time, Seconds
Plasma Arc Light (~2000mW/cm ²)	3	6
GC G-Light (~1200mW/cm ²)	10	20
Halogen / LED (~700mW/cm ²)	20	40
GC Kalore Shade	Depth of Cure	Depth of Cure
CT, NT, WT, GT, CVT	3.0 mm	3.5 mm
A1, A2, B1, B2, D2, C2, XBW, BW, DT	2.5 mm	3.0 mm
A3, B3, A3.5	2.0 mm	3.0 mm
A4, C3, AO2, AO3, AO4, CV, CVD, and OBW, OXBW	1.5 mm	2.5 mm

KALORE™ Shade Guide



The KALORE™ Shade Guide utilizes stepped shade tabs so the clinician can evaluate variations in shade due to thickness. The tabs can also be superimposed to evaluate layering effects.

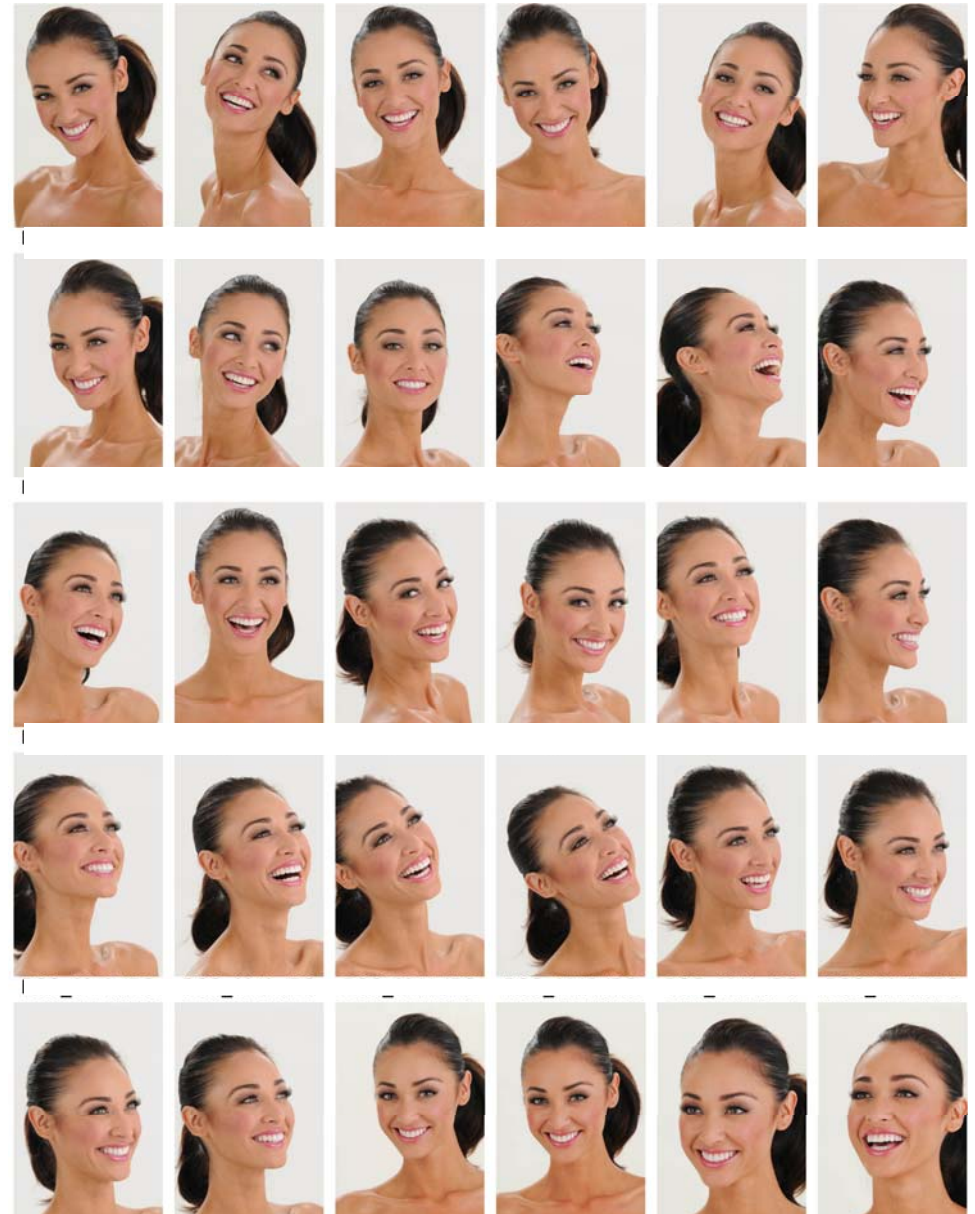
The KALORE™ shade system is based on Vita® Classic.



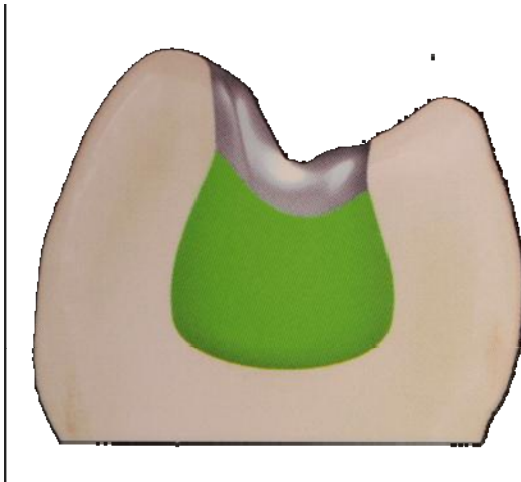
Clinical Applications



Clinical Indications

- Direct composite restorations of Class I, II, III, IV and V Cavities
- Restoration of “wedge shaped defects” and root surface caries
- Facings and veneers
- Diastema closures



Class I and II Direct Restorations



-  Translucent Shade
-  Universal Shade



Dentistry by Dr. Wynn Okuda, HI

Class I Direct Restoration

“Single Shade KALORE™ A2 Universal Only”



Dentistry by Dr. Mark Pitel, NY

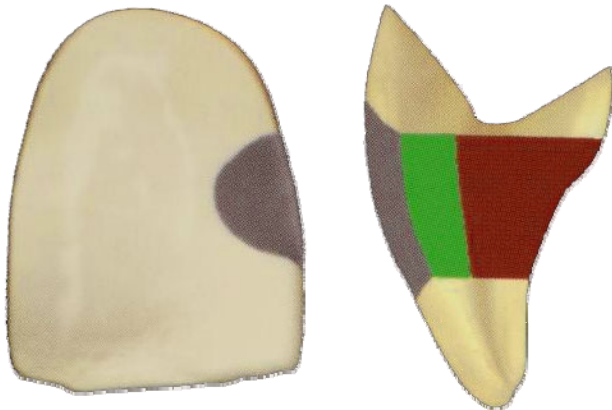
Class II Direct Restorations

“Single Shade Kalore A2 Universal Only”



Dentistry by Dr. Mark Pitel, NY

Class III Direct Restoration



Translucent Shade



Universal Shade



Opaque Shade



Before



After

Dentistry by Dr. Wynn Okuda, HI

Class IV Direct Restorations



Translucent Shade



Universal Shade



Opaque Shade

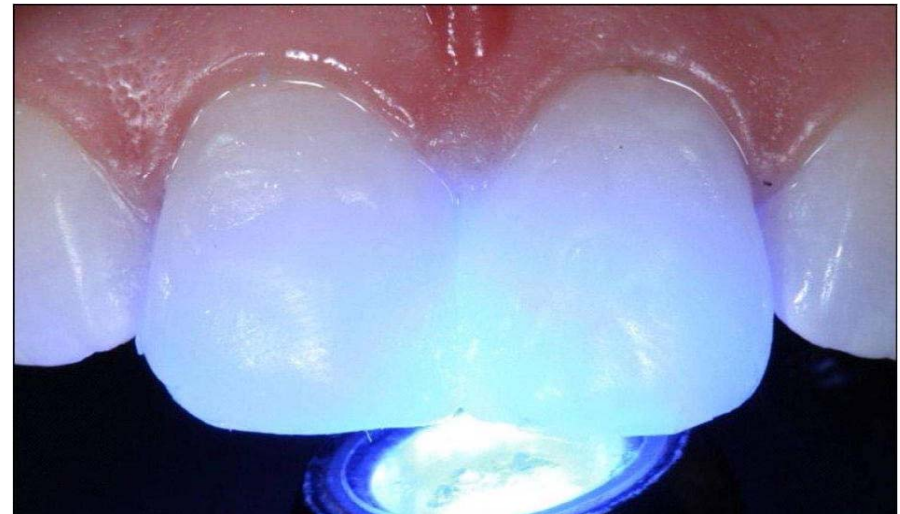


Class IV Restorations



Before

Class IV Restorations



After



Class V Restoration



Dentistry by Dr. Wynn Okuda, HI

Diastema Closure Restorations



Direct Veneer Restorations



Fractured Enamel



Dentistry by Dr. Stewart

Miss Hawaii 2009 with KALORE™



Aureana Tseu



Available Dispensing Options



Single Dose Unitips
0.3g / 0.16mL per tip



Multiuse Syringes
4g / 2.0mL per syringe

Available Product Packaging



KALORE™ Trial Kits



Unitip Trial Kit*
50 Unitips in 3 Shades



Syringe Trial Kit*
1 each 4 g syringe in 3 Shades



*Trial Kit contains 3 shades (A1, A2 and BW)

KALORE™ Refills



Unitip Refills
All 26 Shades



Marketing Collaterals – 6 page brochure



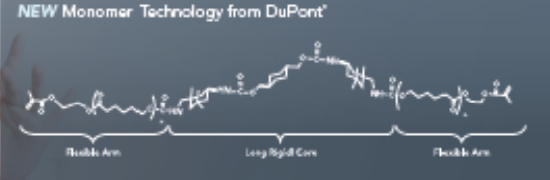
Marketing Collaterals – 6 page brochure

Witness the Discovery of a Revolutionary Composite

Your Search is Over – KALORE™ is Here.

Dentistry has relied on the same basic monomer technology in its materials for decades with advances in resin technology being primarily on the filler side (filler size, filler shape, filler type, etc.). The newest innovation from GC America utilizes an exclusive new monomer technology from DuPont to create a truly revolutionary TOTAL PACKAGE in aesthetic restorations.

NEW Monomer Technology from DuPont[®]



KALORE challenges the status quo by taking aesthetic restorations to the next level – making them more sculptable, easier to polish with exceptional gloss and highly resistant to wear.

Three components factor into KALORE's unique design. First, DuPont's new monomer technology licensed exclusively to KALORE. Second, GC America's newly-developed, patented HDR (High Density Radiopaque) prepolymerized fillers. Finally, the proprietary interface between the filler and the matrix is a critical factor in the success and longevity of this composite. With innovation from every angle, KALORE truly offers the total package of:

- Superior handling
- Unsurpassed aesthetics
- Significant longevity & durability

An Innovation in Restorations Using Exclusive, New Monomer Technology from DuPont

KALORE™ represents the perfect discovery of science and beauty – the total package in aesthetic restorations that has eluded you for so long. Until now.

Benefit #1: Superior Handling – Complete Control is in Your Hands

- KALORE is non-sticky due to the new, patented HDR filler technology
- The DuPont monomer's stiff core and flexible arms create putty-like properties and make it easier to spread

Result: KALORE's unique properties allow for easy shaping and adaptation to the restoration surface. KALORE is highly sculptable with no slumping.

Benefit #2: Unsurpassed Aesthetics – Flawless Beauty, So Easy to Create


- Exceptional gloss:
- Easy polishability:
- Sustained luster:

The lower shrinkage stress of the filler-matrix interface allows for less risk of filler drop out.

• Chameleon effect: The optimized refractive index of the filler and monomer matrix result in near-perfect color matching


Result: Unmatched aesthetic success and perfect restorations for you and your patients.

SEM #1




KALORE with DuPont Monomer – No gap on prepolymerized filler surface; no dropout fillers were observed.

SEM #2



KALORE without DuPont Monomer – Slight gap on prepolymerized filler surface; dropout prepolymerized fillers were observed.

Polishability



"I believe this new monomer formulation has solved the shrinkage challenge by removing the weak link – the shorter chain methacrylate matrix. This new system provides the potential for reducing the clinical challenges such as marginal gap, microleakage, stain and secondary caries while enhancing the aesthetics and wear resistance."

– Douglas Design Technique International


Marketing Collaterals – 6 page brochure

The Science Behind the Smile – PROVEN!

The proof is in the result and the perfect results achieved by using KALORE™ are exemplified in Aureana Teas – Miss Hawaii, 2009 (see photos at right). In an arena where perfection is a requirement, the qualities of KALORE made it the material of choice to highlight and complement her exceptional beauty as she pursued her quest for Miss USA 2009.

"Amazing! KALORE is not only so easy to use, it polishes and feels like porcelain. With its remarkable chameleon effect and low marginal shrinkage, this composite resin has tremendously moved the bar up to a new plateau in aesthetic restorative materials."

– Dr. Wynn Okada, DMD, Past President, AACD, Honolulu, HI



Courtesy of Dr. Wynn Okada, Honolulu, HI

Benefit #3: Significant Longevity and Durability – Sustained Form and Function


During polymerization of composite resin, the resin matrix particles in uniform while the particles retain their prepolymerization volume. This results in stress at the filler and resin matrix interface. This stress remains within the cured composite resin and can lead to early replacement of restorations, as particles will be lost from the matrix. To reduce polymerization stress at the filler/matrix interface, lower levels of polymerization shrinkage are required. The average restoration loses form, function and aesthetics between three to four years as the particles drop out due to shrinkage stress. This causes:

- Surface to lose luster
- Surface to become rough
- Sains to become evident
- Greater wear and tear overall

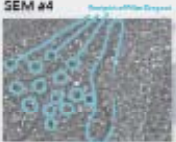
KALORE's unique design results in the lowest shrinkage stress vs. the competition which means less stress around the fillers and better durability and longevity for the restoration.

Results KALORE keeps your restorations beyond compare longer by maintaining their form and function over time.

SEM #3
Flask Supreme III®

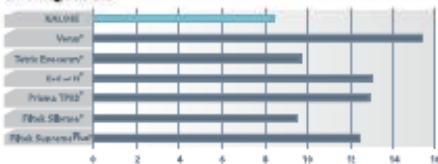


SEM #4
Tetric EvoCeram®



KALORE™ : A Recipe for Your Success

Shrinkage Stress



Material	Shrinkage Stress (%)
KALORE	~2.5
Veneer	~14.5
Tetric EvoCeram	~10.5
Evolux II	~11.5
Prisma 1/2/3	~11.5
Tetric EvoCeram	~10.5
Tetric EvoCeram Plus	~11.5

KALORE clearly exhibits the lowest shrinkage stress amongst those tested.


KALORE offers three opacities for precision shade matching and blending. Whether you choose to use a single shade or multiple shades for polychromatoc stratification, your restorations will look as beautiful as a ceramic restoration, as smooth and perfect as porcelain.

In 90% of cases, the use of a Universal shade will be sufficient. In the remaining 10% – those "special" cases – a combination of Universal, Opaque and/or Translucent shades would be selected. KALORE's simplified shade system gives you a "recipe" to follow for perfection and total control in your restoration aesthetics.


KALORE's Simplified Shade System

	A1	A2	A3	A3.5	A4	B1	B2	B3	C2	C3	D1	CV	CVD	BW	30WH
Opaque	OW	AO	AO	AO	AO	OW	AO	AO	AO	AO	AO	AO	AO	OW	OW
Universal	U1	U2	U3	U3.5	U4	U1	U2	U3	U3.5	U4	U1	U2	U3	U4	U1
Translucent	WT	WT	DT	DT	DT	WT	WT	DT	DT	DT	W	DT	DT	WT	WT


KALORE MULTISHADE BUILDUP GUIDE



BEFORE



AFTER



Courtesy of Dr. Wynn Okada Honolulu, HI
Tooth restored with one shade only.

"As an artist, I look for materials that can complement my creativity. Essentials such as handling, the ability to match tooth structure and capture the correct reflective index of light are attributes of a great composite. KALORE definitely meets these standards of excellence."

– Dr. Frank J. Minac, DDS, AACD, St. Paul, MN

Marketing Collaterals – 36 page Technical Manual



Literature References

1. 1-year evaluation of Class II made with "KALORE" resin composite. M. Ferrari, M. Cagidiaco, M. Chazine, R. Paragliola and S. Grandini. EADR 2009, abstract 010.
2. Polymerization Shrinkage Ratio and Force of Various Resin Composites. F. Fusejima, S. Kaga, T. Kumagai and T. Sakuma. EADR 2009, abstract 0292.
3. Polymerization Shrinkage Ratio of Various Resin Composites. S. Kaga, F. Fusejima, T. Kumagai, T. Sakuma. IADR 2009, abstract 2441.
4. Vertical and Horizontal Setting Shrinkages in Composite Restorations. M. Irie, Y. Tamada, Y. Maruo, G. Nishigawa, M. Oka, S. Minagi, K. Suzuki, D. Watts. IADR 2009, abstract 2443.
5. Esthetic Restorative Treatment Options for the Broken Anterior Ceramic Restoration. Wynn Okuda. Inside Dentistry, February 2009.
6. Reality Now, June 2009 Number 207.
7. A Comparison of Advanced Resin Monomer Technologies. Douglas A. Terry, Karl F. Leinfelder, Markus B. Blatz. Dentistry Today, July 2009.
8. GC America Offers Cutting-Edge Nanocomposite. Compendium, July/August 2009.
9. Achieving Excellence Using an Advanced Biomaterial, Part 1. Douglas A. Terry, Karl F. Leinfelder, Markus B. Blatz. Dentistry Today, August 2009.
10. Creating Lifelike Aesthetics Using Direct Composites. Frank Milnar. Dentistry Today, August 2009.
11. Kalore evaluation, Dental Advisor, December 2009

For further information contact:
GC America Inc.
(800) 323-7063

or visit

www.kalore.net

Dr. Robert Lee
Director of Marketing
email: Robert_Lee@gcamerica.com

